

ALLAMAKEE CSD MIDDLE SCHOOL HVAC UPGRADE
WAUKON, IOWA

ADDENDUM 03
March 11, 2026

GENERAL

1. All work associated with the walk-in cooler and freezer evaporator and condenser replacement shall start and finish in July 2026.

CONTRACTOR QUESTIONS / CLARIFICATIONS

1. Does the stated allowance of \$100,000 for required construction work that is unknown or hidden from view by existing conditions need to be handwritten into the Proposal Form on page PF-2?
No, the amount is already typed into the Proposal Form and is included in all bids.
2. Is structural reinforcement required for new HVAC units on existing buildings?
No, remove any additional structural reinforcement between existing structural members for the installation and support of new HVAC units on the existing building roof. This will be addressed during submittal review.
3. Do the existing doors and frames labeled to remain on A.8 Door Schedule need to be re-certified?
No, only existing frames that remain with new doors being installed need to be re-certified.
4. Can mini-split condensate piping material be PVC without insulation in lieu of copper tubing with insulation?
PVC without insulation is acceptable for mini-split condensate piping above ceilings.

APPROVED SUBSTITUTION REQUESTS:

Specification Section: 15815 HUMIDITY CONTROL

Item: Humidifiers

Manufacturer: DriSteem

Specification Section: 15830 TERMINAL UNITS

Item: Terminal Units, Electric

Manufacturer: Indeeco

SPECIFICATIONS:

S3-1 Section **00 1100 – SUMMARY**

1. **REFER** to Page 3, Paragraph 1.2.C.22 and **REVISE** to **REMOVE INCLUSION OF LINTELS FROM SCOPE.**
“22. Provide new windows as indicated.”

S3-2 Section **00 1100 – SUMMARY**

1. **REFER** to Page 4, Paragraph 1.2.C Design Professionals and **REMOVE FROM SCOPE** item #32 to “Provide pitched roof structural reinforcement as indicated on the drawings.”

DRAWINGS:

- D3-1 Drawing **D-101A – DEMO MECHANICAL & ELECTRICAL PLAN – AREA A**
1. Removed D5 keynote from existing HW heater.
- D3-2 Drawing **D-101B – DEMO MECHANICAL & ELECTRICAL PLAN – AREA B**
1. Removed D5 keynote from existing HW heater.
- M3-1 Drawing **M-101A – MECHANICAL PLAN – AREA A**
1. Added egg crate transfer grilles TG-1 in office spaces to ventilate above ceiling space.
- M3-2 Drawing **M-111B – MECHANICAL PIPING & CONTROLS PLAN – AREA B**
1. Added estimated volume of hot water system for the existing and added piping.
 2. Added glycol collection system within mechanical room.
- M3-3 Drawing **M-602 – MECHANICAL SCHEDULES**
1. Added demand control ventilation note for each hood on the kitchen exhaust hood schedule.
 2. Added egg crate transfer grille TG-1 on the diffuser, register, grille schedule.
- M3-4 Drawing **M-604 – MECHANICAL SCHEDULES**
1. Added glycol collection schedule.
- E3-1 Drawing **E-101B – ELECTRICAL PLAN – AREA B**
1. Added and tagged direct connection symbol for glycol tank in mechanical room.
 2. Added toggle type disconnect switch for glycol tank in mechanical room.
- E3-2 Drawing **E-110A – LIGHTING PLAN – AREA A**
1. Revised light fixtures in concessions room to sequence of operation #1.
 2. Added ceiling-mounted occupancy sensor to conference room.
 3. Revised light fixture in admin corridor to sequence of operation #2.
- E3-3 Drawing **E-601 – ELECTRICAL EQUIPMENT SCHEDULE**
1. Added glycol tank to schedule.
 2. Revised toggle type disconnect switch current rating to 16 A and Nema rating to 1 per its listed basis of design.
- E3-4 Drawing **E-604 – ELECTRICAL PANEL SCHEDULES**
3. Revised panel DB’s mains type to MCB.
- E3-5 Drawing **E-605 – ELECTRICAL PANEL SCHEDULES - PHOTOS**
1. Added photo of boiler panel in mechanical room to show where GT-1 shall be circuited.

Enclosure:
Architectural Addendum
Plans Holders List

END OF ADDENDUM 03

March 11, 2026

Design Dynamics, Inc.
3745 Center Point Road, NE
Cedar Rapids, IA 52402
319-298-0400
Robert Peck, AIA, LEED AP
robertp@designdynamics.biz

Allamakee Community School District Waukon Middle School HVAC Upgrade

Location: Waukon, Iowa

ADDENDUM NUMBER 3

TO ALL HOLDERS OF PLANS AND SPECIFICATIONS:

This addendum is issued to incorporate the following changes in the plans and specifications DATED: February 20, 2026. For bids to be considered, this addendum must be acknowledged by the bidders by so indicating on the Bid Proposal form.

The Contractor shall make the following corrections or additions to the bidding documents. These items shall supersede, modify, and/or change all statements or drawings to the contrary in the plans and specifications and shall take precedence over these documents. Bidders shall base their bid on the plans and specifications and as modified by the changes herein stated.

Contents:

DDI Addendum 3 (1 page)

GENERAL

1. All asbestos flooring will be removed under a separate contract by the owner. East Elementary School rooms that will receive new flooring are noted in the Room Finish Schedule on sheet A.10. Middle School rooms are noted with keynote numbers 7 and 8 on the floor plans. Room numbers in the middle school to receive VCT are as follows: 101, 102, 103, 104A, 104B, 105, 108, 109, 113A, 113B, 114, 122B, 123, 135A, 136, 137, 150, 151, 152, 153A, 153B, 154, 156, 161A, 161B, 164, 165, 166, 167, 187, 190, 195, 197A, 197B, 198, 200, 213. Middle school rooms to receive carpeting are as follows: 205, 206, 207, 208, 209, 210, 211, 212, 213 and corridor at door 214.
2. Clarification: Only door frames with doors that are being replaced need to be re-certified if their label is illegible. If it is an existing door and frame that has no work being performed to it, re-certification of the frame is NOT required.

ARCHITECTURAL DRAWINGS:

1. Sheet A.1, Floor Plan Key Notes, #5. Revised to read as follows: Clean existing ceiling and roof structure, paint ceiling and roof structural elements using a Pre-Catalyzed Water Based Epoxy paint Eg-shell finish. Color as selected by architect.
2. Sheet A.7, East Elementary, West Elevation – Alternate 6. Add the following note to window C: Repair and/or replace existing window jamb and sill masonry, inspect existing window head lintel to ensure its stable structural condition, clean and paint. Notify architect if lintel is found to be in an unstable or deteriorated condition.
3. Sheet A.7, East Elementary, North Elevation – Alternate 6. Add the following note to all windows B, C, D and E: Repair and/or replace existing window jamb and sill masonry, inspect existing window head lintel to ensure its stable structural condition, clean and paint. Notify architect if lintel is found to be in an unstable or deteriorated condition.

APPROVED MANUFACTURERS:

- 1, Section 116143 – Stage Curtains
Gopher Stage Lighting, Inc.

ISSUED FOR

BIDDING

DATE	DESCRIPTION	DATE
02/20/2026		
03-02-2026	ADDENDUM 01	03-02-2026
03-06-2026	ADDENDUM 02	03-06-2026
03-11-2026	ADDENDUM 03	03-11-2026

DRAWN BY: JJR
CHECKED BY: JCL
PROJECT NO.: 9166-10000
SHEET NAME:

MECHANICAL
PIPING &
CONTROLS PLAN -
AREA B

M-111B

NOT FOR CONSTRUCTION

GENERAL MECHANICAL NOTES:

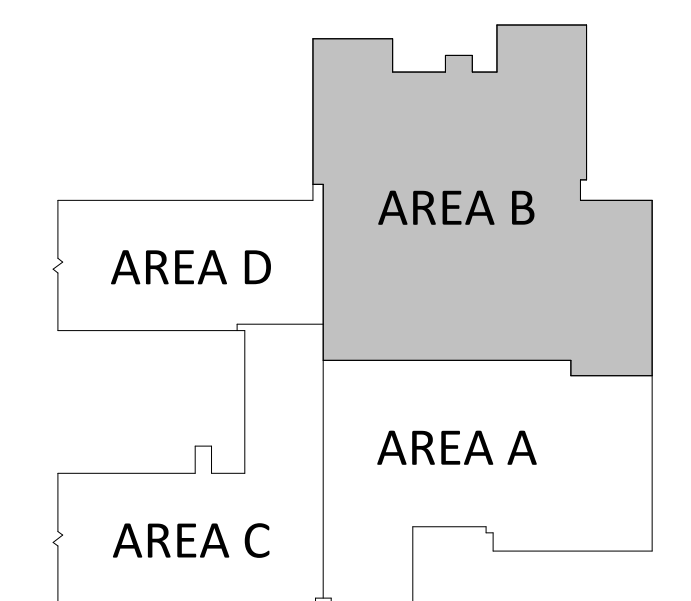
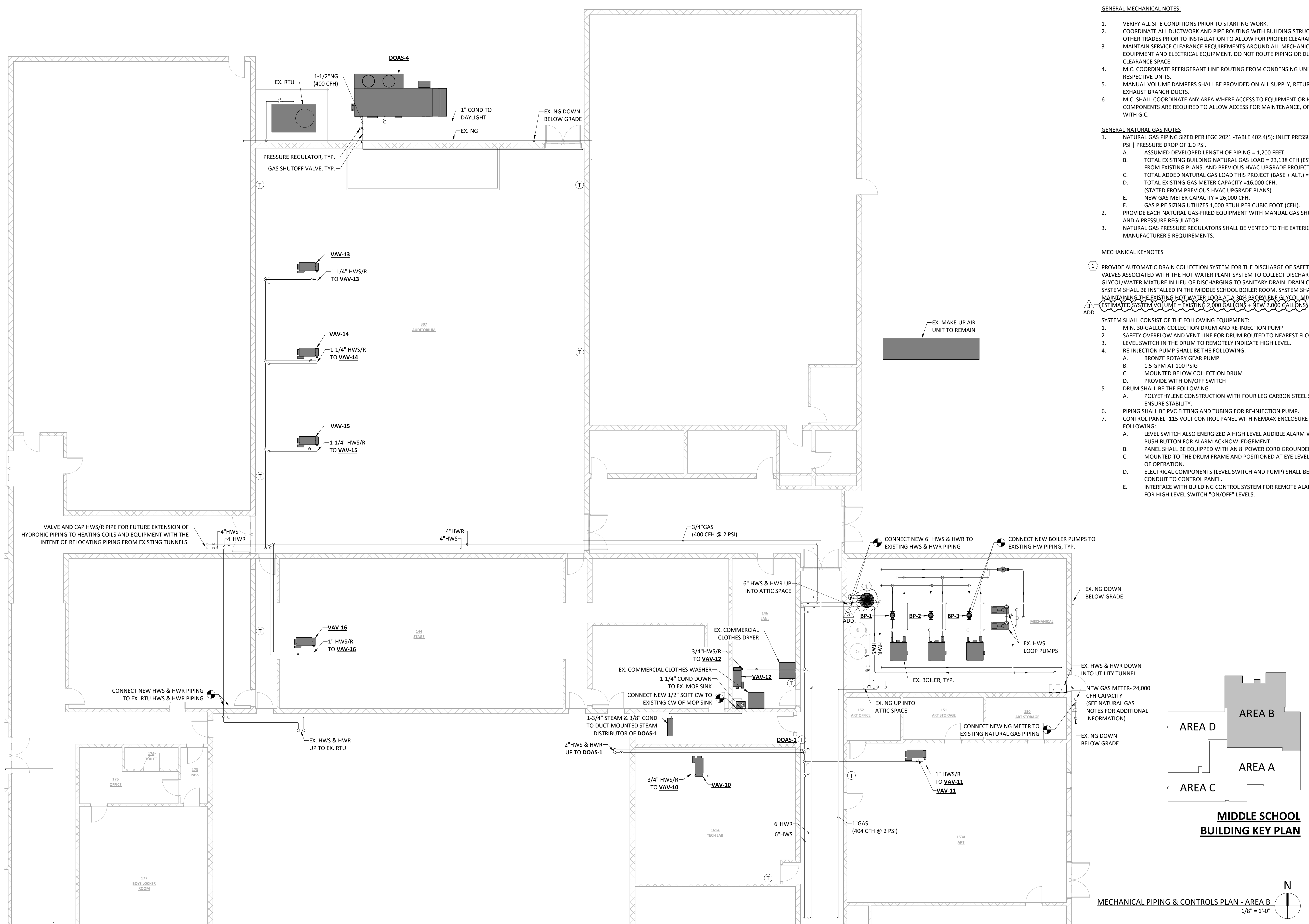
- VERIFY ALL SITE CONDITIONS PRIOR TO STARTING WORK.
- COORDINATE ALL DUCTWORK AND PIPE ROUTING WITH BUILDING STRUCTURE AND OTHER TRADES PRIOR TO INSTALLATION TO ALLOW FOR PROPER CLEARANCE SPACE.
- MAINTAIN SERVICE CLEARANCE REQUIREMENTS AROUND ALL MECHANICAL EQUIPMENT AND ELECTRICAL EQUIPMENT. DO NOT ROUTE PIPING OR DUCTWORK IN CLEARANCE SPACE.
- M.C. COORDINATE REFRIGERANT LINE ROUTING FROM CONDENSING UNITS TO THE RESPECTIVE UNITS.
- MANUAL VOLUME DAMPERS SHALL BE PROVIDED ON ALL SUPPLY, RETURN, AND EXHAUST BRANCH DUCTS.
- M.C. SHALL COORDINATE ANY AREA WHERE ACCESS TO EQUIPMENT OR HVAC COMPONENTS ARE REQUIRED TO ALLOW ACCESS FOR MAINTENANCE, OR INSPECTION WITH G.C.

GENERAL NATURAL GAS NOTES

- NATURAL GAS PIPING SIZED PER IFGC 2021 -TABLE 402.4(5): INLET PRESSURE AT 2.0 PSI | PRESSURE DROP OF 1.0 PSI.
 - ASSUMED DEVELOPED LENGTH OF PIPING = 1,200 FEET.
 - TOTAL EXISTING BUILDING NATURAL GAS LOAD = 23,138 CFH (ESTIMATED FROM EXISTING PLANS, AND PREVIOUS HVAC UPGRADE PROJECT).
 - TOTAL ADDED NATURAL GAS LOAD THIS PROJECT (BASE + ALT.) = 2,683 CFH.
 - TOTAL EXISTING GAS METER CAPACITY = 16,000 CFH. (STATED FROM PREVIOUS HVAC UPGRADE PLANS)
 - NEW GAS METER CAPACITY = 26,000 CFH.
 - GAS PIPE SIZING UTILIZES 1,000 BTUH PER CUBIC FOOT (CFH).
- PROVIDE EACH NATURAL GAS-FIRED EQUIPMENT WITH MANUAL GAS SHUTOFF VALVE AND A PRESSURE REGULATOR.
- NATURAL GAS PRESSURE REGULATORS SHALL BE VENTED TO THE EXTERIOR PER MANUFACTURER'S REQUIREMENTS.

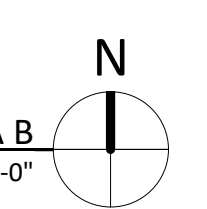
MECHANICAL KEYNOTES

- PROVIDE AUTOMATIC DRAIN COLLECTION SYSTEM FOR THE DISCHARGE OF SAFETY RELIEF VALVES ASSOCIATED WITH THE HOT WATER PLANT SYSTEM TO COLLECT DISCHARGED GLYCOL/WATER MIXTURE IN LIEU OF DISCHARGING TO SANITARY DRAIN. DRAIN COLLECTION SYSTEM SHALL BE INSTALLED IN THE MIDDLE SCHOOL BOILER ROOM. SYSTEM SHALL ASSIST MAINTAINING THE EXISTING HOT WATER LOOP AT A 30% PROPYLENE GLYCOL MIXTURE. (ESTIMATED SYSTEM VOLUME = EXISTING 2,000 GALLONS + NEW 2,000 GALLONS)
- SYSTEM SHALL CONSIST OF THE FOLLOWING EQUIPMENT:
 - MIN. 30-GALLON COLLECTION DRUM AND RE-INJECTION PUMP
 - SAFETY OVERFLOW AND VENT LINE FOR DRUM ROUTED TO NEAREST FLOOR DRAIN.
 - LEVEL SWITCH IN THE DRUM TO REMOTELY INDICATE HIGH LEVEL.
 - RE-INJECTION PUMP SHALL BE THE FOLLOWING:
 - BRONZE ROTARY GEAR PUMP
 - 1.5 GPM AT 100 PSIG
 - MOUNTED BELOW COLLECTION DRUM
 - PROVIDE WITH ON/OFF SWITCH
- DRUM SHALL BE THE FOLLOWING
 - POLYETHYLENE CONSTRUCTION WITH FOUR LEG CARBON STEEL SUPPORT TO ENSURE STABILITY.
- PIPING SHALL BE PVC FITTING AND TUBING FOR RE-INJECTION PUMP.
- CONTROL PANEL- 115 VOLT CONTROL PANEL WITH NEMA4X ENCLOSURE WITH THE FOLLOWING:
 - LEVEL SWITCH ALSO ENERGIZED A HIGH LEVEL AUDIBLE ALARM WITH SILENCE PUSH BUTTON FOR ALARM ACKNOWLEDGEMENT.
 - PANEL SHALL BE EQUIPPED WITH AN 8' POWER CORD GROUNDED PLUG.
 - MOUNTED TO THE DRUM FRAME AND POSITIONED AT EYE LEVEL FOR EASE OF OPERATION.
 - ELECTRICAL COMPONENTS (LEVEL SWITCH AND PUMP) SHALL BE WIRED IN CONDUIT TO CONTROL PANEL.
 - INTERFACE WITH BUILDING CONTROL SYSTEM FOR REMOTE ALARMS AND FOR HIGH LEVEL SWITCH "ON/OFF" LEVELS.



MIDDLE SCHOOL BUILDING KEY PLAN

MECHANICAL PIPING & CONTROLS PLAN - AREA B
1/8" = 1'-0"



NOT FOR CONSTRUCTION

AIRFLOW MATRIX												
ROOM NAME	ROOM #	AREA (FT2)	SUPPLY	RETURN	MIN. VENTILATION RATES			EXHAUST	ZONE DISTRIBUTION EFFECTIVENESS (Ez)	IMC CALCULATED VENTILATION (CFM)	TOTAL EXHAUST (CFM)	SYSTEM
					OCCUPANCY	CFM/PERSON	CFM/FT2					
AG CLASSROOM	167	882 SF	1500 CFM	1500 CFM	30	10.0 CFM	0.12 CFM	0 CFM	0.8	507 CFM	0 CFM	DOAS-1
ART	153A	1225 SF	2000 CFM	2000 CFM	20	10.0 CFM	0.12 CFM	0 CFM	0.8	434 CFM	0 CFM	DOAS-1
ART OFFICE	152	81 SF	100 CFM	0 CFM	2	5.0 CFM	0.06 CFM	0 CFM	0.8	19 CFM	100 CFM	DOAS-1
ART STORAGE	151	118 SF	150 CFM	0 CFM	0	0.0 CFM	0.06 CFM	0 CFM	0.8	9 CFM	150 CFM	DOAS-1
ART STORAGE	150	119 SF	150 CFM	0 CFM	0	0.0 CFM	0.06 CFM	0 CFM	0.8	9 CFM	150 CFM	DOAS-1
CLOSET 1		33 SF	50 CFM	0 CFM	0	0.0 CFM	0.00 CFM	0 CFM	0.8	0 CFM	0 CFM	DOAS-1
CLOSET 2		33 SF	50 CFM	0 CFM	0	0.0 CFM	0.00 CFM	0 CFM	0.8	0 CFM	0 CFM	DOAS-1
CORRIDOR	159	1507 SF	800 CFM	800 CFM	0	0.0 CFM	0.06 CFM	0 CFM	0.8	113 CFM	0 CFM	DOAS-1
DRY ART ROOM	153B	587 SF	1000 CFM	1000 CFM	10	10.0 CFM	0.12 CFM	0 CFM	0.8	213 CFM	0 CFM	DOAS-1
DUST COLLECTION	157C	158 SF	50 CFM	0 CFM	0	0.0 CFM	0.06 CFM	0 CFM	0.8	12 CFM	50 CFM	DOAS-1
INDUSTRIAL CLASSROOM	154	1132 SF	2000 CFM	2000 CFM	25	10.0 CFM	0.12 CFM	0 CFM	0.8	482 CFM	0 CFM	DOAS-1
INDUSTRIAL OFFICE	156	80 SF	100 CFM	100 CFM	2	5.0 CFM	0.06 CFM	0 CFM	0.8	19 CFM	0 CFM	DOAS-1
INDUSTRIAL STORAGE	155	144 SF	150 CFM	150 CFM	0	0.0 CFM	0.06 CFM	0 CFM	0.8	11 CFM	0 CFM	DOAS-1
JAN.	146	332 SF	300 CFM	0 CFM	0	0.0 CFM	0.06 CFM	0 CFM	0.8	25 CFM	0 CFM	DOAS-1
KILN	153C	119 SF	0 CFM	0 CFM	0	0.0 CFM	0.06 CFM	0 CFM	0.8	9 CFM	800 CFM	DOAS-1
OFFICE	157B	77 SF	250 CFM	0 CFM	0	0.0 CFM	0.06 CFM	0 CFM	0.8	6 CFM	0 CFM	DOAS-1
OFFICE	166	137 SF	150 CFM	150 CFM	2	5.0 CFM	0.06 CFM	0 CFM	0.8	23 CFM	0 CFM	DOAS-1
OFFICE	165	135 SF	150 CFM	150 CFM	2	5.0 CFM	0.06 CFM	0 CFM	0.8	23 CFM	0 CFM	DOAS-1
SHOP CLASSROOM	161B	511 SF	800 CFM	800 CFM	20	10.0 CFM	0.12 CFM	0 CFM	0.8	327 CFM	0 CFM	DOAS-1
STORAGE ROOM 1		236 SF	150 CFM	150 CFM	0	0.0 CFM	0.06 CFM	0 CFM	0.8	18 CFM	0 CFM	DOAS-1
STORAGE ROOM 2		81 SF	100 CFM	0 CFM	0	0.0 CFM	0.06 CFM	0 CFM	0.8	6 CFM	0 CFM	DOAS-1
TECH LAB	161A	753 SF	1200 CFM	1200 CFM	20	10.0 CFM	0.12 CFM	0 CFM	0.8	363 CFM	0 CFM	DOAS-1
WOOD SHOP	157A	1892 SF	3400 CFM	0 CFM	20	10.0 CFM	0.12 CFM	0 CFM	0.8	534 CFM	3400 CFM	DOAS-1
CAFETERIA / STUDY HALL	170	3134 SF	7000 CFM	7000 CFM	130	7.5 CFM	0.18 CFM	0 CFM	0.8	1924 CFM	0 CFM	DOAS-2
BOYS LOCKER ROOM	177	705 SF	1275 CFM	1000 CFM	0	0.0 CFM	0.00 CFM	450 CFM	0.8	0 CFM	450 CFM	DOAS-3
COACH	184	100 SF	100 CFM	100 CFM	2	5.0 CFM	0.06 CFM	0 CFM	0.8	20 CFM	0 CFM	DOAS-3
GIRLS LOCKER ROOM	182	593 SF	1275 CFM	1000 CFM	0	0.0 CFM	0.00 CFM	375 CFM	0.8	0 CFM	375 CFM	DOAS-3
M SHOWER	179	145 SF	0 CFM	275 CFM	0	0.0 CFM	0.00 CFM	200 CFM	0.8	0 CFM	250 CFM	DOAS-3
OFFICE	176	148 SF	100 CFM	100 CFM	1	5.0 CFM	0.06 CFM	0 CFM	0.8	17 CFM	70 CFM	DOAS-3
PASS	173	53 SF	50 CFM	50 CFM	0	0.0 CFM	0.00 CFM	0 CFM	0.8	0 CFM	0 CFM	DOAS-3
PASS	183	50 SF	50 CFM	50 CFM	0	0.0 CFM	0.00 CFM	0 CFM	0.8	0 CFM	0 CFM	DOAS-3
STORAGE	181	35 SF	0 CFM	50 CFM	0	0.0 CFM	0.06 CFM	0 CFM	0.8	3 CFM	0 CFM	DOAS-3
STORAGE	178	99 SF	0 CFM	50 CFM	0	0.0 CFM	0.06 CFM	0 CFM	0.8	7 CFM	0 CFM	DOAS-3
TOILET	174	40 SF	50 CFM	50 CFM	0	0.0 CFM	0.00 CFM	70 CFM	0.8	0 CFM	70 CFM	DOAS-3
TOILET	185	48 SF	100 CFM	100 CFM	0	0.0 CFM	0.00 CFM	70 CFM	0.8	0 CFM	70 CFM	DOAS-3
W SHOWER	180	145 SF	0 CFM	275 CFM	0	0.0 CFM	0.00 CFM	200 CFM	0.8	0 CFM	250 CFM	DOAS-3
A/V	308	210 SF	200 CFM	200 CFM	5	5.0 CFM	0.06 CFM	0 CFM	0.8	47 CFM	0 CFM	DOAS-4
AUDITORIUM	307	4438 SF	5400 CFM	7000 CFM	400	5.0 CFM	0.06 CFM	0 CFM	0.8	2833 CFM	0 CFM	DOAS-4
STAGE	144	1740 SF	1600 CFM	0 CFM	30	10.0 CFM	0.06 CFM	0 CFM	0.8	506 CFM	0 CFM	DOAS-4
BUSINESS MANAGER	209	139 SF	150 CFM	150 CFM	2	5.0 CFM	0.06 CFM	0 CFM	0.8	23 CFM	0 CFM	DOAS-6
CONCESSION	187	97 SF	150 CFM	150 CFM	2	5.0 CFM	0.06 CFM	0 CFM	0.8	20 CFM	0 CFM	DOAS-6
CONF	212	70 SF	100 CFM	100 CFM	1	5.0 CFM	0.06 CFM	0 CFM	0.8	12 CFM	0 CFM	DOAS-6
CONFERENCE	198	170 SF	300 CFM	300 CFM	10	5.0 CFM	0.06 CFM	0 CFM	0.8	75 CFM	0 CFM	DOAS-6
CONFERENCE / BOARD ROOM	207	268 SF	400 CFM	400 CFM	8	5.0 CFM	0.06 CFM	0 CFM	0.8	70 CFM	0 CFM	DOAS-6
DISTRICT OFFICE	211	451 SF	400 CFM	400 CFM	4	5.0 CFM	0.06 CFM	0 CFM	0.8	59 CFM	0 CFM	DOAS-6
FRONT OFFICE	205	318 SF	250 CFM	250 CFM	4	5.0 CFM	0.06 CFM	0 CFM	0.8	49 CFM	0 CFM	DOAS-6
GUIDANCE	197	170 SF	200 CFM	200 CFM	2	5.0 CFM	0.06 CFM	0 CFM	0.8	25 CFM	0 CFM	DOAS-6
HEALTH	191	142 SF	200 CFM	200 CFM	2	5.0 CFM	0.06 CFM	0 CFM	0.8	23 CFM	0 CFM	DOAS-6
NURSE	190	120 SF	150 CFM	150 CFM	2	5.0 CFM	0.06 CFM	0 CFM	0.8	22 CFM	0 CFM	DOAS-6
OFFICE	210	124 SF	150 CFM	150 CFM	2	5.0 CFM	0.06 CFM	0 CFM	0.8	22 CFM	0 CFM	DOAS-6
PRINCIPAL	206	193 SF	200 CFM	200 CFM	2	5.0 CFM	0.06 CFM	0 CFM	0.8	27 CFM	0 CFM	DOAS-6
RECORDS	199	86 SF	50 CFM	50 CFM	0	0.0 CFM	0.06 CFM	0 CFM	0.8	6 CFM	0 CFM	DOAS-6
STORAGE	213	65 SF	100 CFM	100 CFM	0	0.0 CFM	0.06 CFM	0 CFM	0.8	5 CFM	0 CFM	DOAS-6
STORAGE	204	86 SF	50 CFM	50 CFM	0	0.0 CFM	0.06 CFM	0 CFM	0.8	6 CFM	0 CFM	DOAS-6
SUPERINTENDENT OFFICE	208	247 SF	250 CFM	250 CFM	2	5.0 CFM	0.06 CFM	0 CFM	0.8	31 CFM	0 CFM	DOAS-6
TEACHER WORKROOM	195	389 SF	815 CFM	815 CFM	20	5.0 CFM	0.12 CFM	0 CFM	0.8	180 CFM	0 CFM	DOAS-6
TOILET	188	97 SF	150 CFM	0 CFM	0	0.0 CFM	0.00 CFM	210 CFM	0.8	0 CFM	210 CFM	DOAS-6
TOILET	189	124 SF	200 CFM	0 CFM	0	0.0 CFM	0.00 CFM	280 CFM	0.8	0 CFM	280 CFM	DOAS-6
TOILET	192	85 SF	50 CFM	0 CFM	0	0.0 CFM	0.00 CFM	70 CFM	0.8	0 CFM	70 CFM	DOAS-6
TOILET	201	41 SF	50 CFM	0 CFM	0	0.0 CFM	0.00 CFM	70 CFM	0.8	0 CFM	70 CFM	DOAS-6
TOILET	202	41 SF	50 CFM	0 CFM	0	0.0 CFM	0.00 CFM	70 CFM	0.8	0 CFM	70 CFM	DOAS-6
JAN.	203	60 SF	0 CFM	0 CFM	0	0.0 CFM	0.06 CFM	0 CFM	0.8	5 CFM	70 CFM	EF-1
DRY STORAGE	158D	573 SF	400 CFM	400 CFM	0	0.0 CFM	0.06 CFM	0 CFM	0.8	43 CFM	0 CFM	MAU-1
KITCHEN	169	1839 SF	3400 CFM	3400 CFM	10	7.5 CFM	0.12 CFM	1290 CFM	0.8	370 CFM	5470 CFM	MAU-1
KITCHEN HALLWAY	169A	353 SF	300 CFM	300 CFM	0	0.0 CFM	0.06 CFM	0 CFM	0.8	26 CFM	0 CFM	MAU-1
OFFICE	158C	110 SF	100 CFM	100 CFM	0	0.0 CFM	0.06 CFM	0 CFM	0.8	8 CFM	0 CFM	MAU-1
OFFICE	158A	98 SF	100 CFM	100 CFM	2	5.0 CFM	0.06 CFM	0 CFM	0.8	20 CFM	0 CFM	MAU-1
TOILET	158B	51 SF	50 CFM	0 CFM	0	0.0 CFM	0.00 CFM	70 CFM	0.8	0 CFM	70 CFM	MAU-1
TOILET	162	66 SF	50 CFM	0 CFM	0	0.0 CFM	0.00 CFM	70 CFM	0.8	0 CFM	70 CFM	RTU-1
TOILET	163	68 SF	50 CFM	0 CFM	0	0.0 CFM	0.00 CFM	70 CFM	0.8	0 CFM	70 CFM	RTU-1

GRAVITY ROOF INTAKE VENTILATOR SCHEDULE								
PLAN MARK	AIRFLOW (CFM)	EXTERNAL STATIC PRESSURE	APPLICATION	MOUNTING	DUCT CONNECTION SIZE (W" X D")	OVERALL HOOD SIZE (W" X L" X H")	MANUFACTURER MODEL	NOTES
GRI-1	400	0.13	INTAKE	ROOF	10" X 10"	18.75" X 18.75" X 10.25"	LOREN COOK GRAVITY INTAKE VENTILATOR 8 PR	ALL

1. INSTALL INTAKE VENTILATOR, **GRI-1** ON MANUFACTURER'S PROVIDED CURB CAP.

RADIANT HEATING PANEL SCHEDULE															
PLAN MARK	HEATING PERFORMANCE (BTUH / LF)	HW SUPPLY SIZE	FLOWRATE (GPM)	WATER PD / 100 FT OF 0.505 ID TUBE (FT HEAD)	MEAN WATER TEMP MWT (°F)	ΔT °F	NUMBER OF PASSES	DIMENSIONS (INCH)				MOUNTING / INSTALLATION	AREA SERVED	MANUFACTURER MODEL	NOTES
								LENGTH	WIDTH	THICKNESS	TUBE ID				
RP-1	430	3/4"	2.05	12.9	180	20	4	48	24	0.08	0.505	LAY-IN 2X4 ACT CEILING	REFER TO PLANS	AERO TECH RADIANT LINEAR EXTRUDED PANELS - MODEL AXO	ALL

1. HEATING PERFORMANCE BASED ON PERIMETER RADIANT PANELS.
2. PROVIDE WALL-MOUNTED THERMOSTATS, SEE PLANS FOR LOCATIONS AND PAIRING.
3. REFER TO MANUFACTURER'S RECOMMENDATIONS FOR INSTALLATION REQUIREMENTS IN ARCHITECT'S CEILING TYPE.

VIBRATION ISOLATION SCHEDULE					
PLAN MARK	EQUIPMENT DESCRIPTION	BASE TYPE	ISOLATION TYPE	MINIMUM DEFLECTION	NOTES
DOAS	DEDICATED OUTSIDE AIR SYSTEM	A	3	2"	1, 2, 3
BP	INLINE CIRCULATING PUMPS	A	3	0.75"	1, 2
CONDENSER	CONDENSING UNITS	A	4	1.5"	1, 2

1. SEE SPECIFICATION SECTION 15 240 FOR BASE TYPE AND ISOLATOR TYPE DESCRIPTIONS.
2. TYPICAL FOR ALL UNITS OF THIS TYPE.
3. FOR UNITS WITH FANS INTERNALLY ISOLATED WITH SPRING ISOLATORS, EXTERNAL ISOLATORS MAY BE OMITTED. INTERNAL FAN ISOLATION SHALL BE MINIMUM 2" DEFLECTION.
4. PROVIDE ISOLATORS FOR THE FIRST THREE PIPE SUPPORTS.

CIRCULATING PUMP SCHEDULE										
PLAN MARK	FLOW RATE (GPM)	HEAD LOSS (FT. HEAD)	INLET SIZE (DIA.)	ELECTRICAL			MOUNT TYPE	MANUFACTURER / MODEL NO.	SYSTEM	NOTES
				HP	VOLTAGE	Ø				
BP-1	135.0	30.0	3"	1-1/2	208	3	IN-LINE	TACO CIRCULATING PUMP MODEL KV3006	BOILER CIRCULATOR	ALL
BP-2	135.0	30.0	3"	1-1/2	208	3	IN-LINE	TACO CIRCULATING PUMP MODEL KV3006	BOILER CIRCULATOR	ALL
BP-3	135.0	30.0	3"	1-1/2	208	3	IN-LINE	TACO CIRCULATING PUMP MODEL KV3006	BOILER CIRCULATOR	ALL

1. PUMPS SHALL BE CAPABLE OF CIRCULATING 30% PROPYLENE GLYCOL / 70% WATER MIXTURE WORKING FLUID.
2. PUMP SELECTIONS SHALL HAVE THE ABILITY FOR AT LEAST ONE (1) IMPELLER SIZE INCREASE.
3. PUMPS SHALL BE PROVIDED WITH CHECK VALVE DOWN STREAM OF PUMP.

EXHAUST FAN SCHEDULE										
PLAN MARK	AIRFLOW (CFM)	STATIC PRESSURE	EXHAUST TYPE	ELECTRICAL			MOUNTING	MANUFACTURER MODEL	NOTES	
				HP	AMPS	VOLTAGE				
EF-1	70	0.15	GENERAL	0.04	0.3	120	1	ROOF	LOREN COOK ROOF EXHAUST FAN MODEL 70C10DH	1 & 5
EF-2	3,400	0.20	INDUSTRIAL	1.25	11.0	208	1	ROOF	LOREN COOK ROOF INDUSTRIAL EF MODEL 225 VCRD-XP	2, 3, & 5
EF-3	180	0.15	GENERAL	0.06	0.4	120	1	CEILING	LOREN COOK CEILING EXHAUST FAN MODEL GC-148	1 & 5
KEF-1	1,010	0.73	TYPE I	0.5	6.3	115	1	ROOF	ECON-AIR ROOF KITCHEN EF MODEL EADU50H	4 & 5
KEF-2	1,010	0.73	TYPE I	0.5	6.3	115	1	ROOF	ECON-AIR ROOF KITCHEN EF MODEL EADU50H	4 & 5
KEF-3	1,050	0.60	TYPE I	0.5	6.3	115	1	ROOF	ECON-AIR ROOF KITCHEN EF MODEL EADU50H	4 & 5

1. EXHAUST FAN **EF-1** & **EF-3** SHALL ENERGIZE WITH THE LIGHT SWITCH.
2. EXHAUST FAN **EF-2** TO ENERGIZE WITH THE ASSOCIATED HVAC UNIT, **DOAS-1**.
3. EXHAUST FAN **EF-2** SHALL BE INSTALLED ON THE EXISTING FAN ROOF CURB.
4. KITCHEN EXHAUST FANS **KEF-1**, **KEF-2**, & **KEF-3** SHALL BE INSTALLED ON 18" TALL HINGED ROOF CURB.
5. SEE MANUFACTURER'S MANUALS FOR INSTALL AND MOUNTING REQUIREMENTS.

KITCHEN EXHAUST HOOD SCHEDULE												
PLAN MARK	HOOD LENGTH	EXHAUST TYPE	APPLIANCE DUTY	DESIGN EXHAUST CFM/FT	TOTAL EXHAUST (CFM)	EXHAUST CONNECTION (Ø)						

ISSUED FOR

BIDDING

DATE	02/20/2026
DESCRIPTION	DATE
ADDENDUM 01	03-02-2026
ADDENDUM 03	03-11-2026

DRAWN BY	JCL
CHECKED BY	JCL
PROJECT NO.	9166-10000

SHEET NAME

MECHANICAL SCHEDULES

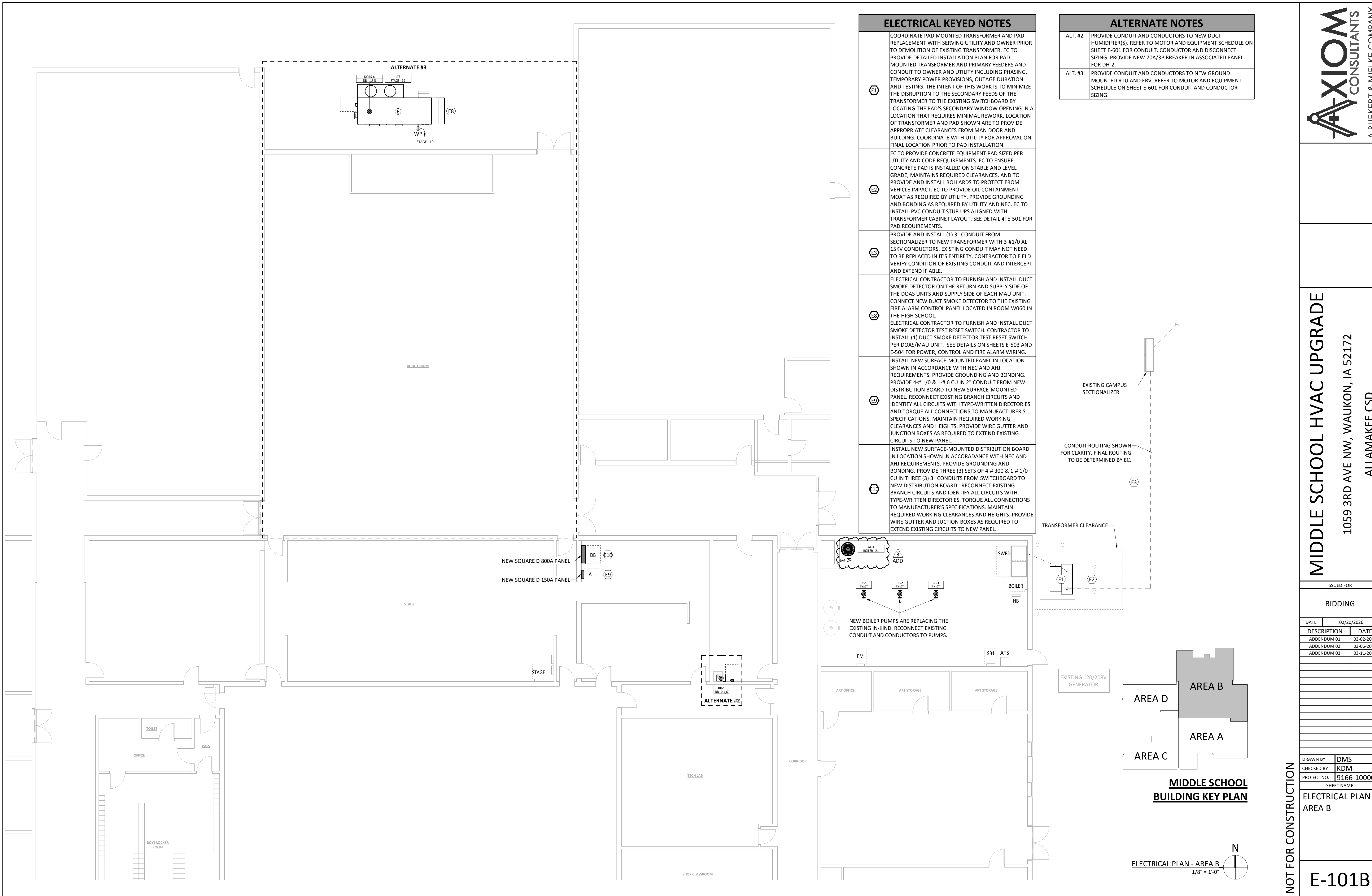
M-604

NOT FOR CONSTRUCTION

GLYCOL COLLECTION SYSTEM SCHEDULE												
PLAN MARK	LOCATION	SYSTEM	TANK SIZE (HEIGHT X Ø)	TANK VOLUME	MAX. WORKING PRESSURE	FILL FLOW (GPM)	PRV (PSI)	ELECTRICAL			MANUFACTURER MODEL	NOTES
								HP	VOLTAGE	Ø		
GT-1	MECHANICAL ROOM	HEATING HOT WATER	42" X 28"	50 GAL	70 PSI	1.8	15	1/3	120	1	WESSELS 13050	ALL
1. PROVIDE 30% PROPYLENE GLYCOL MAKE-UP WATER SYSTEM WITH LOW-LEVEL ALARM AND CONTROLLER, PRESSURIZED TANK, CHECK VALVE, PRV FILL VALVE, ISOLATION VALVES, PRESSURE GAUGES, GLYCOL MIXING TANK, PROVIDE WITH CORD AND PLUG AND FILL PUMP. 2. LOW-LEVEL ALARM TO BE MONITORED BY CONTROLS SYSTEM. COORDINATE CONNECTIONS WITH TEMPERATURE CONTROLS CONTRACTOR.												

DIRECT-FIRED MAKE-UP AIR UNIT SCHEDULE																																			
PLAN MARK	SUPPLY FAN(S)					COOLING LOADS			COOLING AIR CONDITIONS			EFFICIENCY (IEER)	REFRIGERANT	HEATING				HEATING AIR CONDITIONS			FUEL - NATURAL GAS			HEAT EXCHANGER MATERIAL	MIN. EFFICIENCY	ELECTRICAL				DIMENSIONS (INCH)			WEIGHT (LBS.)	MANUFACTURER MODEL	NOTES
	DESIGN AIRFLOW	ESP / TSP	DRIVE TYPE	MOTOR		SENSIBLE (MBH)	LATENT (MBH)	TOTAL (MBH)	EAT DB/WB	LAT DB/WB	INPUT (MBH)			OUTPUT (MBH)	EAT (DEG. F)	TEMP RISE (DEG. F)	AFUE	GAS SIZE (Ø)	MIN.-MAX. INLET PRESSURE	HP	AMP	VOLTAGE	Ø			LENGTH	WIDTH	HEIGHT							
MAU-1	1800	0.5 / 0.6	DIRECT / VFD	1	1.5	--	--	--	--	--	--	--	--	160	148	-10	80	81%	1"	7"-14" W.C.	STAINLESS STEEL	81%	1.5	10	208	1	120	28	30	600	ECON-AIR MODEL A1-D.500-15D	1,2,3,5,6,7,8,9,10,11,12,13			
MAU-2	915	0.5 / 0.7	DIRECT / ECM	1	1	--	--	--	--	--	--	--	--	82	75	-10	80	81%	1"	7"-14" W.C.	STAINLESS STEEL	81%	1	6.9	208	1	84	22	22	400	ECON-AIR MODEL D76	1,2,4,5,6,7,8,9,10,11,12,13			
MAU-3	1800	0.5 / 0.6	DIRECT / VFD	1	1.5	--	--	--	--	--	--	--	--	162	149	-10	80	81%	1"	7"-14" W.C.	STAINLESS STEEL	81%	1.5	10	208	1	120	28	30	600	ECON-AIR MODEL A1-D.500-15D	1,2,3,5,6,7,8,9,10,11,12,13			

- NO COOLING PROVIDED IN KITCHEN HOOD MAKEUP AIR UNITS.
- ALL UNITS SHALL BE DOWN DISCHARGE.
- SUPPLY BLOWER TO BE PREMIUM EFFICIENCY, WITH MANUFACTURER PROVIDE VFD.
- SUPPLY BLOWER TO BE FORWARD CURVE CENTRIFUGAL BLOWER WITH ECM MOTOR.
- PROVIDE HI/LOW GAS PRESSURE SWITCHES.
- PROVIDE HIGH GAS PRESSURE REGULATOR.
- PROVIDE HIGH TEMPERATURE LIMIT SWITCH.
- PROVIDE METAL MESH FILTER ON INTAKE.
- PROVIDE WITH MOTORIZED INTAKE DAMPER THAT CLOSES WHEN KITCHEN HOOD IS NOT ENERGIZED.
- PROVIDE CLOGGED FILTER SWITCH.
- PROVIDE FACTORY WIRED 115V CONVENIENCE OUTLET, 5 MINUTE TDR OFF.
- PROVIDE UNIT MOUNTED DISCONNECT SWITCH.
- MOUNT ROOFTOP UNIT ON 18" ROOF CURB.

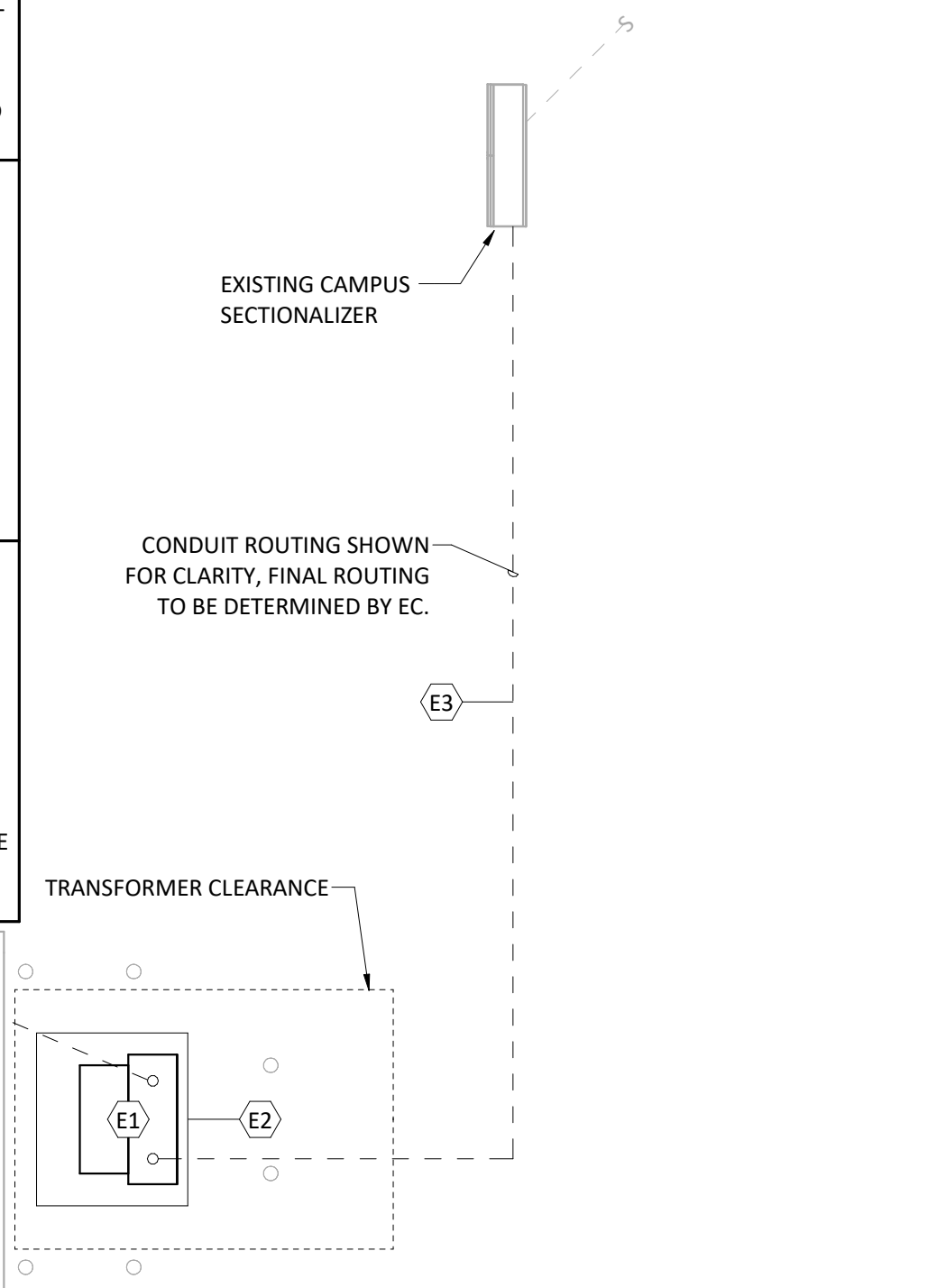


ELECTRICAL KEYED NOTES

- E1 COORDINATE PAD MOUNTED TRANSFORMER AND PAD REPLACEMENT WITH SERVING UTILITY AND OWNER PRIOR TO DEMOLITION OF EXISTING TRANSFORMER. EC TO PROVIDE DETAILED INSTALLATION PLAN FOR PAD MOUNTED TRANSFORMER AND PRIMARY FEEDERS AND CONDUIT TO OWNER AND UTILITY INCLUDING PHASING, TEMPORARY POWER PROVISIONS, OUTAGE DURATION AND TESTING. THE INTENT OF THIS WORK IS TO MINIMIZE THE DISRUPTION TO THE SECONDARY FEEDS OF THE TRANSFORMER TO THE EXISTING SWITCHBOARD BY LOCATING THE PAD'S SECONDARY WINDOW OPENING IN A LOCATION THAT REQUIRES MINIMAL REWORK. LOCATION OF TRANSFORMER AND PAD SHOWN ARE TO PROVIDE APPROPRIATE CLEARANCES FROM MAN DOOR AND BUILDING. COORDINATE WITH UTILITY FOR APPROVAL ON FINAL LOCATION PRIOR TO PAD INSTALLATION.
- E2 EC TO PROVIDE CONCRETE EQUIPMENT PAD SIZED PER UTILITY AND CODE REQUIREMENTS. EC TO ENSURE CONCRETE PAD IS INSTALLED ON STABLE AND LEVEL GRADE, MAINTAINS REQUIRED CLEARANCES, AND TO PROVIDE AND INSTALL BOLLARDS TO PROTECT FROM VEHICLE IMPACT. EC TO PROVIDE OIL CONTAINMENT MOAT AS REQUIRED BY UTILITY. PROVIDE GROUNDING AND BONDING AS REQUIRED BY UTILITY AND NEC. EC TO INSTALL PVC CONDUIT STUB UPS ALIGNED WITH TRANSFORMER CABINET LAYOUT. SEE DETAIL 4|E-501 FOR PAD REQUIREMENTS.
- E3 PROVIDE AND INSTALL (1) 3" CONDUIT FROM SECTIONALIZER TO NEW TRANSFORMER WITH 3-#1/0 AL 15KV CONDUCTORS. EXISTING CONDUIT MAY NOT NEED TO BE REPLACED IN IT'S ENTIRETY, CONTRACTOR TO FIELD VERIFY CONDITION OF EXISTING CONDUIT AND INTERCEPT AND EXTEND IF ABLE.
- E4 ELECTRICAL CONTRACTOR TO FURNISH AND INSTALL DUCT SMOKE DETECTOR ON THE RETURN AND SUPPLY SIDE OF THE DOAS UNITS AND SUPPLY SIDE OF EACH MAU UNIT. CONNECT NEW DUCT SMOKE DETECTOR TO THE EXISTING FIRE ALARM CONTROL PANEL LOCATED IN ROOM W060 IN THE HIGH SCHOOL.
- E5 ELECTRICAL CONTRACTOR TO FURNISH AND INSTALL DUCT SMOKE DETECTOR TEST RESET SWITCH. CONTRACTOR TO INSTALL (1) DUCT SMOKE DETECTOR TEST RESET SWITCH PER DOAS/MAU UNIT. SEE DETAILS ON SHEETS E-503 AND E-504 FOR POWER, CONTROL AND FIRE ALARM WIRING.
- E6 INSTALL NEW SURFACE-MOUNTED PANEL IN LOCATION SHOWN IN ACCORDANCE WITH NEC AND AHJ REQUIREMENTS. PROVIDE GROUNDING AND BONDING. PROVIDE 4-# 1/0 & 1-# 6 CU IN 2" CONDUIT FROM NEW DISTRIBUTION BOARD TO NEW SURFACE-MOUNTED PANEL. RECONNECT EXISTING BRANCH CIRCUITS AND IDENTIFY ALL CIRCUITS WITH TYPE-WRITTEN DIRECTORIES AND TORQUE ALL CONNECTIONS TO MANUFACTURER'S SPECIFICATIONS. MAINTAIN REQUIRED WORKING CLEARANCES AND HEIGHTS. PROVIDE WIRE GUTTER AND JUNCTION BOXES AS REQUIRED TO EXTEND EXISTING CIRCUITS TO NEW PANEL.
- E7 INSTALL NEW SURFACE-MOUNTED DISTRIBUTION BOARD IN LOCATION SHOWN IN ACCORDANCE WITH NEC AND AHJ REQUIREMENTS. PROVIDE GROUNDING AND BONDING. PROVIDE THREE (3) SETS OF 4-# 300 & 1-# 1/0 CU IN THREE (3) 3" CONDUITS FROM SWITCHBOARD TO NEW DISTRIBUTION BOARD. RECONNECT EXISTING BRANCH CIRCUITS AND IDENTIFY ALL CIRCUITS WITH TYPE-WRITTEN DIRECTORIES. TORQUE ALL CONNECTIONS TO MANUFACTURER'S SPECIFICATIONS. MAINTAIN REQUIRED WORKING CLEARANCES AND HEIGHTS. PROVIDE WIRE GUTTER AND JUNCTION BOXES AS REQUIRED TO EXTEND EXISTING CIRCUITS TO NEW PANEL.

ALTERNATE NOTES

- ALT. #2 PROVIDE CONDUIT AND CONDUCTORS TO NEW DUCT HUMIDIFIER(S). REFER TO MOTOR AND EQUIPMENT SCHEDULE ON SHEET E-601 FOR CONDUIT, CONDUCTOR AND DISCONNECT SIZING. PROVIDE NEW 70A/3P BREAKER IN ASSOCIATED PANEL FOR DH-2.
- ALT. #3 PROVIDE CONDUIT AND CONDUCTORS TO NEW GROUND MOUNTED RTU AND ERV. REFER TO MOTOR AND EQUIPMENT SCHEDULE ON SHEET E-601 FOR CONDUIT AND CONDUCTOR SIZING.



ISSUED FOR

BIDDING	
DATE	02/20/2026
DESCRIPTION	DATE
ADDENDUM 01	03-02-2026
ADDENDUM 02	03-06-2026
ADDENDUM 03	03-11-2026

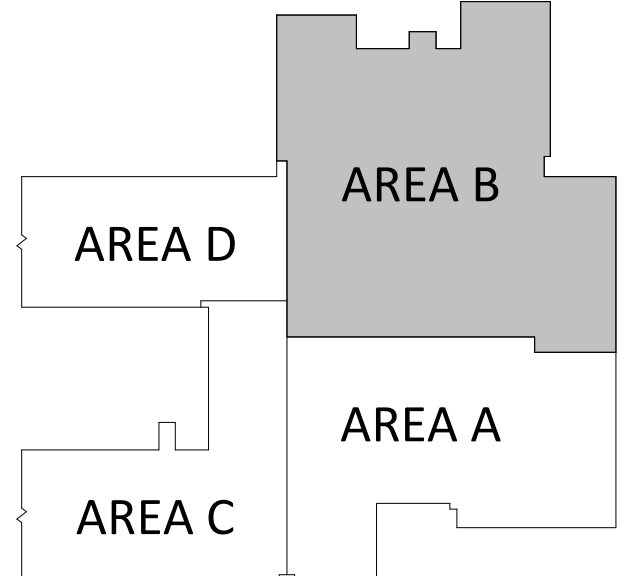
DATE	02/20/2026
DESCRIPTION	DATE
ADDENDUM 01	03-02-2026
ADDENDUM 02	03-06-2026
ADDENDUM 03	03-11-2026

DRAWN BY: DMS
CHECKED BY: KDM
PROJECT NO.: 9166-10000

SHEET NAME
ELECTRICAL PLAN - AREA B

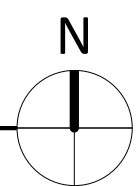
NOT FOR CONSTRUCTION

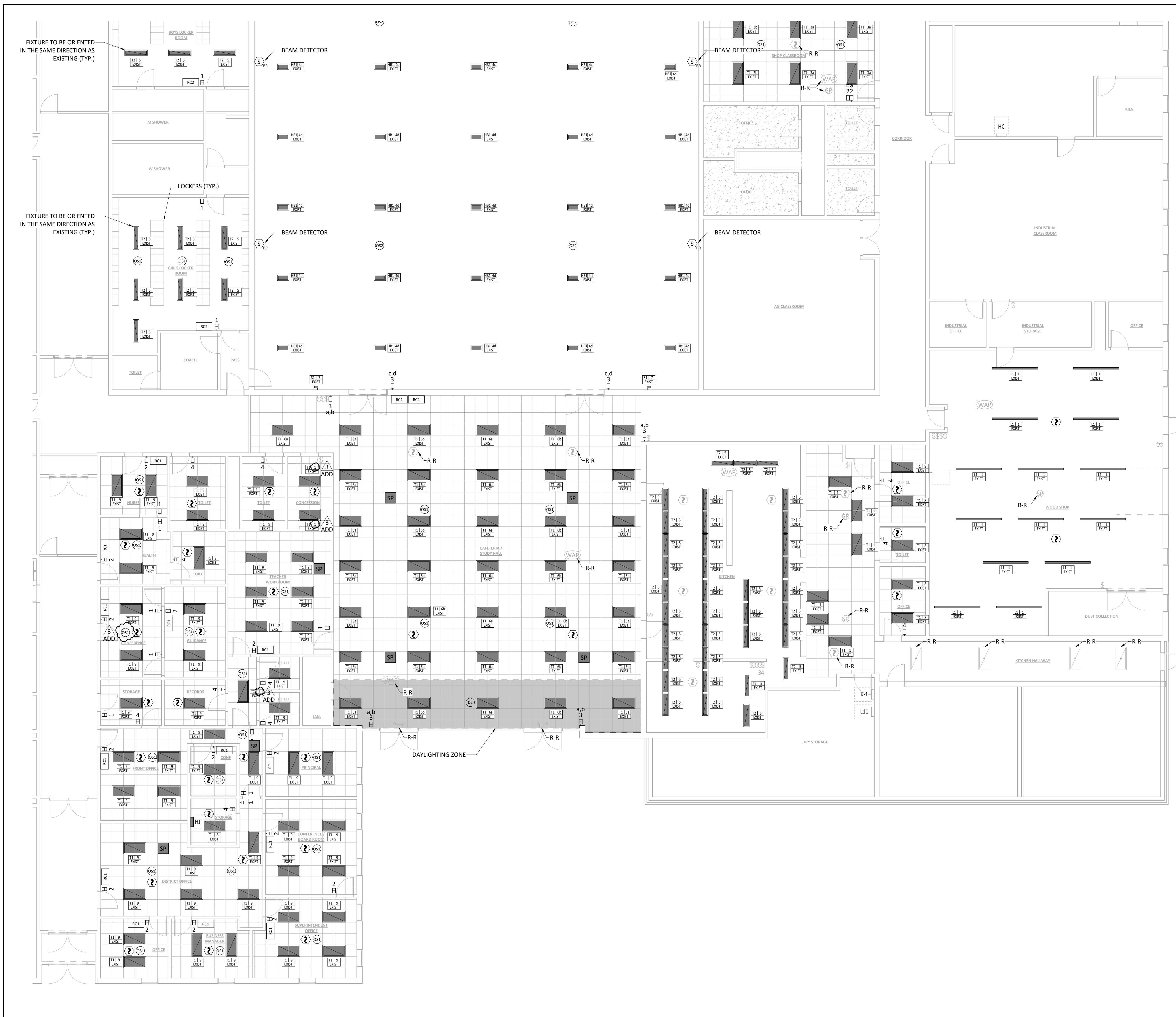
E-101B



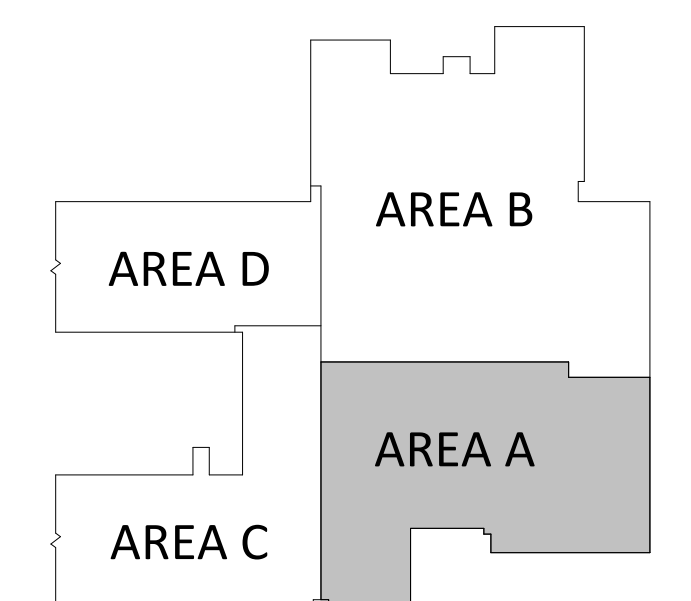
MIDDLE SCHOOL BUILDING KEY PLAN

ELECTRICAL PLAN - AREA B
1/8" = 1'-0"





- REFLECTED CEILING PLAN NOTES**
- CONTRACTOR SHALL REMOVE ALL CEILING MOUNTED DEVICES AND STORE FOR RE-INSTALLATION ONCE CEILING WORK IS COMPLETED. THIS INCLUDES LIGHTING, FIRE ALARM, WIRELESS ACCESS POINTS AND OTHER CEILING MOUNTED DEVICES. THESE DEVICES ARE DENOTED WITH "R-R", ALL DEVICES MAY NOT BE SHOWN. EXTEND WIRING AND CONDUIT TO DEVICES AS REQUIRED FOR OPERATION. CONTRACTOR SHALL FAMILIARIZE THEMSELVES WITH THE BUILDING PRIOR TO BIDDING TO EVALUATE THE NUMBER AND TYPES OF DEVICES TO BE RE-INSTALLED. WHERE NEW SPEAKERS ARE SHOWN, PROVIDE AND INSTALL NEW SPEAKERS AND TIE INTO EXISTING SPEAKER WIRING. NEW CEILING HAS BEEN INSTALLED, RE-INSTALL DEVICES IN NEW CEILING.
 - PROVIDE NEW CONTROLS IN ALL ROOMS PROVIDED WITH NEW LIGHTING. PROVIDE CONTROL WIRING, SENSORS, SWITCHES, ROOM CONTROLLERS, POWER PACKS AND CONDUIT AS REQUIRED FOR OPERATION.
 - EXISTING CEILING MOUNTED SPEAKER TO BE DEMOED IN CAFETERIA AND ADMIN AREA. NEW SPEAKERS SHALL BE A 2X2 DROP IN CEILING SPEAKER, 70V, PLENUM RATED. CONFIRM EXISTING SPEAKER VOLTAGE AND TAP SETTINGS PRIOR TO ORDERING. BASIS OF DESIGN: LEGRAND CG41509
 - GYMNASIUM LIGHTING IS CONTROLLED THROUGH AN EXISTING MIGHT RELAY PANEL. PRIOR TO ORDERING OCCUPANCY SENSORS, CONFIRM SENSORS WILL INTEGRATE WITH EXISTING CONTROL PANEL.
 - ELECTRICAL CONTRACTOR TO FURNISH AND INSTALL NEW SMOKE DETECTOR COMPATIBLE WITH THE EXISTING "NOTIFIER" FIRE ALARM SYSTEM. CONNECT NEW SMOKE DETECTORS TO THE EXISTING FIRE ALARM CONTROL PANEL. FIRE ALARM CONTROL PANEL LOCATED IN ROOM W060.
 - ELECTRICAL CONTRACTOR TO FURNISH AND INSTALL NEW BEAM DETECTORS IN GYMNASIUM. PROVIDE DETECTORS THAT ARE COMPATIBLE WITH EXISTING "NOTIFIER" FIRE ALARM SYSTEM. CONNECT NEW BEAM DETECTORS TO THE EXISTING FIRE ALARM CONTROL PANEL. CONTROL PANEL LOCATED IN ROOM W060 IN HIGH SCHOOL.
 - ALL PLATES SHALL BE STAINLESS STEEL. PROVIDE DUAL GANG PLATES WHERE REQUIRED



MIDDLE SCHOOL BUILDING KEY PLAN

LIGHTING PLAN - AREA A
1/8" = 1'-0"

ISSUED FOR

BIDDING	
DATE	02/20/2026
DESCRIPTION	DATE
ADDENDUM 01	03-02-2026
ADDENDUM 02	03-06-2026
ADDENDUM 03	03-11-2026

DRAWN BY	SMF
CHECKED BY	KDM
PROJECT NO.	9166-10000
SHEET NAME	

LIGHTING PLAN - AREA A

NOT FOR CONSTRUCTION

DATE	02/20/2026	DATE
DESCRIPTION		
ADDENDUM 01		03-02-2026
ADDENDUM 02		03-06-2026
ADDENDUM 03		03-11-2026

DRAWN BY	SMF
CHECKED BY	DMS
PROJECT NO.	9166-10000
SHEET NAME	

ELECTRICAL EQUIPMENT SCHEDULE

NOT FOR CONSTRUCTION

MOTOR AND EQUIPMENT SCHEDULE

EQUIP TAG	NOTES: EQUIPMENT TAGS NOTED AS ## & ## ARE WIRED TO SAME CIRCUIT. AMPACITY SHOWN IS TOTAL CIRCUIT AMPS.									STARTER/DISCONNECT E-FURNISHED BY ELECTRICAL CONTRACTOR M-FURNISHED BY MECHANICAL CONTRACTOR					
	DESCRIPTION	AMP	VOLTAGE	# OF POLES	WIRE SIZE	CONDUIT	PANEL	MCA	MOC	DISC	SW AMPS	FUSE AMPS	NEMA RATING	NOTES	REMARKS
BP-1	BOILER PUMP	6.9 A	208 V	3	3-#12, 1-#12	3/4"	EXISTING	8.6 A	15 A	N/A				5	WITHIN SIGHT
BP-2	BOILER PUMP	6.9 A	208 V	3	3-#12, 1-#12	3/4"	EXISTING	8.6 A	15 A	N/A				5	WITHIN SIGHT
BP-3	BOILER PUMP	6.9 A	208 V	3	3-#12, 1-#12	3/4"	EXISTING	8.6 A	15 A	N/A				5	WITHIN SIGHT
CC-1	COOLER CONDENSER	14.3 A	208 V	3	3-#10, 1-#10	3/4"	L11	20 A	25 A	E	30A	NF	3R		
CE-1	COOLER EVAPORATOR	14.4 A	120 V	1	1-#12, 1-#12, 1-#12	3/4"	EXISTING	15.5 A	20 A	E	30A	NF	3R	5	
CU-1 / BB-1 / UV-#	CONDENSING UNIT / UNIT VENTILLATORS	44.0 A	208 V	2	2-#6, 1-#10	1"	HJ	55 A	60 A	E	60A	NF	3R	4	
CU-2 / UV-#	CONDENSING UNIT / UNIT VENTILLATORS	36.0 A	208 V	2	2-#8, 1-#10	1"	HJ	45 A	50 A	E	60A	NF	3R	4	
CU-3 / UV-#	CONDENSING UNIT / UNIT VENTILLATORS	36.0 A	208 V	2	2-#8, 1-#10	1"	HJ	45 A	50 A	E	60A	NF	3R	4	
CU-4 / BB-2 / UV-#	CONDENSING UNIT / UNIT VENTILLATORS	44.0 A	208 V	2	2-#6, 1-#10	1"	HJ	55 A	60 A	E	60A	NF	3R	4	
DH-1	DUCT HUMIDIFIER	52.0 A	208 V	3	3-#4, 1-#8	1 1/4"	DB	65 A	70 A	E	100 A	100 A	1	2	
DH-2	DUCT HUMIDIFIER	52.0 A	208 V	3	3-#4, 1-#8	1 1/4"	HE	65 A	70 A	E	100 A	100 A	1	2	
DH-3	DUCT HUMIDIFIER	52.0 A	208 V	3	3-#4, 1-#8	1 1/4"	HJ	65 A	70 A	E	100 A	100 A	1	2	
DOAS-1	DEDICATED OUTSIDE AIR SYSTEM	258.0 A	208 V	3	3-#350 KCMIL, 1-#4	3"	DB	268.1 A	300 A	M				1	
DOAS-2	DEDICATED OUTSIDE AIR SYSTEM	101.6 A	208 V	3	3-#1, 1-#6	2"	DB	109 A	125 A	M				1	
DOAS-3	DEDICATED OUTSIDE AIR SYSTEM	91.1 A	208 V	3	3-#1, 1-#6	2"	DB	107.7 A	125 A	M				1	
DOAS-4	DEDICATED OUTSIDE AIR SYSTEM	105.5 A	208 V	3	3-#1, 1-#6	2"	DB	112.9 A	125 A	M				1, 3	
DOAS-5	DEDICATED OUTSIDE AIR SYSTEM	49.5 A	208 V	3	3-#4, 1-#8	1 1/4"	K-1	61.9 A	70 A	M				1	
DOAS-6	DEDICATED OUTSIDE AIR SYSTEM	33.6 A	208 V	3	3-#8, 1-#10	1"	HJ	41 A	50 A	M				1	
EF-1	EXHAUST FAN	0.3 A	120 V	1	1-#12, 1-#12, 1-#12	3/4"	HJ	0.4 A	15 A	N/A					CONTROLLED VIA SWITCH
EF-2	EXHAUST FAN	7.0 A	208 V	2	2-#10, 1-#10	3/4"	EXISTING	8.8 A	30 A	N/A					ENERGIZED VIA RTU
EF-3	EXHAUST FAN	0.4 A	120 V	1	1-#12, 1-#12, 1-#12	3/4"	EXISTING	0.5 A	20 A	N/A				5	CONTROLLED VIA SWITCH
FC-2	FREEZER CONDENSER	26.7 A	208 V	3	3-#8, 1-#10	1"	L11	32.7 A	50 A	E	60A	NF	3R		
FE-1	FREEZER EVAPORATOR	13.7 A	208 V	2	2-#12, 1-#12	3/4"	L11	18.6 A	20 A	E	16 A	NF	1	6	TOGGLE TYPE
FE-2	FREEZER EVAPORATOR	13.7 A	208 V	2	2-#12, 1-#12	3/4"	L11	18.6 A	20 A	E	16 A	NF	1	6	TOGGLE TYPE
GT-1	GLYCOL TANK	9.8 A	120 V	1	1-#12, 1-#12, 1-#12	3/4"	BOILER	12.2 A	20 A	E	16 A	NF	1	6	TOGGLE TYPE
KEF-1	KITCHEN EXHAUST FAN	6.3 A	120 V	1	1-#12, 1-#12, 1-#12	3/4"	EXISTING	7.9 A	15 A	M				5	
KEF-2	KITCHEN EXHAUST FAN	6.3 A	120 V	1	1-#12, 1-#12, 1-#12	3/4"	EXISTING	7.9 A	15 A	M				5	
KEF-3	KITCHEN EXHAUST FAN	6.3 A	120 V	1	1-#12, 1-#12, 1-#12	3/4"	K-1	7.9 A	15 A	M					
MAU-1	MAKE-UP AIR FAN	11.4 A	208 V	2	2-#12, 1-#12	3/4"	K-1	14.2	20 A	M					
MAU-2	MAKE-UP AIR FAN	7.8 A	208 V	2	2-#12, 1-#12	3/4"	K-1	9.8 A	15 A	M					
MAU-3	MAKE-UP AIR FAN	7.8 A	208 V	2	2-#12, 1-#12	3/4"	K-1	9.8 A	15 A	M					

- NOTES:
- UNIT PROVIDED WITH UV LAMP AND CONVENIENCE RECEPTACLE. PROVIDE 20A/1P CIRCUIT TO UNIT FOR UV AND RECEPTACLE.
 - EQUIPMENT INCLUDED UNDER ALTERNATE #2.
 - EQUIPMENT INCLUDED UNDER ALTERNATE #3.
 - ELECTRICAL CONTRACTOR TO WIRE CONDENSATE PUMPS FOR EACH UNIT VENTILATOR (UV).
 - EQUIPMENT SHALL BE REPLACED IN-KIND. ELECTRICAL CONTRACTOR TO FIELD-VERIFY THE EXISTING CIRCUIT AND PANEL SERVING THE ORIGINAL EQUIPMENT AND CONNECT THE NEW EQUIPMENT TO EXISTING CIRCUIT.
 - TOGGLE SWITCH BASIS OF DESIGN: SQUARE D 2510FG5

ELECTRICAL KEYED NOTES - MASTER

E1	COORDINATE PAD MOUNTED TRANSFORMER AND PAD REPLACEMENT WITH SERVING UTILITY AND OWNER PRIOR TO DEMOLITION OF EXISTING TRANSFORMER. EC TO PROVIDE DETAILED INSTALLATION PLAN FOR PAD MOUNTED TRANSFORMER AND PRIMARY FEEDERS AND CONDUIT TO OWNER AND UTILITY INCLUDING PHASING, TEMPORARY POWER PROVISIONS, OUTAGE DURATION AND TESTING. THE INTENT OF THIS WORK IS TO MINIMIZE THE DISRUPTION TO THE SECONDARY FEEDS OF THE TRANSFORMER TO THE EXISTING SWITCHBOARD BY LOCATING THE PAD'S SECONDARY WINDOW OPENING IN A LOCATION THAT REQUIRES MINIMAL REWORK. LOCATION OF TRANSFORMER AND PAD SHOWN ARE TO PROVIDE APPROPRIATE CLEARANCES FROM MAIN DOOR AND BUILDING. COORDINATE WITH UTILITY FOR APPROVAL ON FINAL LOCATION PRIOR TO PAD INSTALLATION.
E2	EC TO PROVIDE CONCRETE EQUIPMENT PAD SIZED PER UTILITY AND CODE REQUIREMENTS. EC TO ENSURE CONCRETE PAD IS INSTALLED ON STABLE AND LEVEL GRADE, MAINTAINS REQUIRED CLEARANCES, AND TO PROVIDE AND INSTALL BOLLARDS TO PROTECT FROM VEHICLE IMPACT. EC TO PROVIDE OIL CONTAINMENT MOAT AS REQUIRED BY UTILITY. PROVIDE GROUNDING AND BONDING AS REQUIRED BY UTILITY AND NEC. EC TO INSTALL PVC CONDUIT STUB UPS ALIGNED WITH TRANSFORMER CABINET LAYOUT. SEE DETAIL 41E-501 FOR PAD REQUIREMENTS.
E3	PROVIDE AND INSTALL (1) 3" CONDUIT FROM SECTIONALIZER TO NEW TRANSFORMER WITH 3-#1/0 AL 15KV CONDUCTORS. EXISTING CONDUIT MAY NOT NEED TO BE REPLACED IN ITS ENTIRETY. CONTRACTOR TO FIELD VERIFY CONDITION OF EXISTING CONDUIT AND INTERCEPT AND EXTEND IF ABLE.
E4	PROVIDE AN ADDRESSABLE MONITOR MODULE TO INTERFACE WITH THE KITCHEN HOOD FIRE SUPPRESSION SYSTEM. UPON ACTIVATION OF THE SUPPRESSION SYSTEM, THE MONITOR MODULE SHALL INITIATE A GENERAL FIRE ALARM CONDITION THROUGH THE FIRE ALARM CONTROL PANEL (FACP). MODULE SHALL BE INSTALLED IN ACCORDANCE WITH NFPA 72 AND MANUFACTURER REQUIREMENTS. COORDINATE WIRING AND TERMINATION REQUIREMENTS WITH THE KITCHEN HOOD SUPPRESSION CONTRACTOR.
E5	EXISTING RECEPTACLES MOUNTED UNDER HOOD SHALL BE RE-INSTALLED ONCE NEW HOOD IS INSTALLED.
E6	KITCHEN EXHAUST FANS (KEF-H) - NEW EXHAUST FANS ARE REPLACING EXISTING IN KIND. PROVIDE NEW CONDUIT AND CONDUCTORS TO NEW EXHAUST FANS. SEE MOTOR AND EQUIPMENT SCHEDULE FOR CONDUIT AND CONDUCTOR SIZING. EXISTING HOOD CIRCUITING COULD NOT BE IDENTIFIED BY PANELBOARD SCHEDULE. ELECTRICAL CONTRACTOR SHALL IDENTIFY CIRCUITS FEEDING EXHAUST FANS PRIOR TO DEMOLITION.
E7	ELECTRICAL CONTRACTOR TO WIRE CONTROL PANEL TO SHUNT TRIP COIL TO SHUT OFF EQUIPMENT UNDER HOOD IN FIRE CONDITION. ELECTRICAL CONTRACTOR TO WIRE CONTROL PANEL TO N.C. CONTACTS OF GAS SOLENOID TO SHUT OFF GAS IN FIRE CONDITION. ELECTRICAL CONTRACTOR TO WIRE CONTROL PANEL TO SUPPLY FANS/MAKE-UP AIR FANS TO SHUT OFF IN FIRE CONDITION. ELECTRICAL CONTRACTOR TO WIRE CONTROL PANEL TO EXHAUST FANS, HOOD LIGHTS, AND TEMPERATURE SENSOR. EXHAUST FANS TO BE WIRED TO UNIT INTERLOCK SO THAT EXHAUST FANS ENERGIZE AUTOMATICALLY WHEN COOKING APPLIANCES ARE IN USE.
E8	ELECTRICAL CONTRACTOR TO FURNISH AND INSTALL DUCT SMOKE DETECTOR ON THE RETURN AND SUPPLY SIDE OF THE DOAS UNITS AND SUPPLY SIDE OF EACH MAU UNIT. CONNECT NEW DUCT SMOKE DETECTOR TO THE EXISTING FIRE ALARM CONTROL PANEL LOCATED IN ROOM W060 IN THE HIGH SCHOOL. ELECTRICAL CONTRACTOR TO FURNISH AND INSTALL DUCT SMOKE DETECTOR TEST RESET SWITCH. CONTRACTOR TO INSTALL (1) DUCT SMOKE DETECTOR TEST RESET SWITCH PER DOAS/MAU UNIT. SEE DETAILS ON SHEETS E-503 AND E-504 FOR POWER, CONTROL AND FIRE ALARM WIRING.
E9	INSTALL NEW SURFACE-MOUNTED PANEL IN LOCATION SHOWN IN ACCORDANCE WITH NEC AND AHJ REQUIREMENTS. PROVIDE GROUNDING AND BONDING. PROVIDE 4-# 1/0 & 1-# 6 CU IN 2" CONDUIT FROM NEW DISTRIBUTION BOARD TO NEW SURFACE-MOUNTED PANEL. RECONNECT EXISTING BRANCH CIRCUITS AND IDENTIFY ALL CIRCUITS WITH TYPE-WRITTEN DIRECTORIES AND TORQUE ALL CONNECTIONS TO MANUFACTURER'S SPECIFICATIONS. MAINTAIN REQUIRED WORKING CLEARANCES AND HEIGHTS. PROVIDE WIRE GUTTER AND JUNCTION BOXES AS REQUIRED TO EXTEND EXISTING CIRCUITS TO NEW PANEL.
E10	INSTALL NEW SURFACE-MOUNTED DISTRIBUTION BOARD IN LOCATION SHOWN IN ACCORDANCE WITH NEC AND AHJ REQUIREMENTS. PROVIDE GROUNDING AND BONDING. PROVIDE THREE (3) SETS OF 4-# 300 & 1-# 1/0 CU IN THREE (3) 3" CONDUITS FROM SWITCHBOARD TO NEW DISTRIBUTION BOARD. RECONNECT EXISTING BRANCH CIRCUITS AND IDENTIFY ALL CIRCUITS WITH TYPE-WRITTEN DIRECTORIES. TORQUE ALL CONNECTIONS TO MANUFACTURER'S SPECIFICATIONS. MAINTAIN REQUIRED WORKING CLEARANCES AND HEIGHTS. PROVIDE WIRE GUTTER AND JUNCTION BOXES AS REQUIRED TO EXTEND EXISTING CIRCUITS TO NEW PANEL.
E11	PROVIDE TEMPORARY AND EMERGENCY POWER TO THE MIDDLE SCHOOL IT ROOMS PRIOR TO REPLACEMENT OF THE MIDDLE SCHOOL TRANSFORMER AND ELECTRICAL SERVICE. THE HIGH SCHOOL ELECTRICAL SERVICE SHALL REMAIN ENERGIZED AND SHALL BE USED AS THE SOURCE FOR TEMPORARY POWER. CONTRACTOR SHALL DETERMINE THE MEANS AND METHODS OF PROVIDING BOTH TEMPORARY AND EMERGENCY POWER, INCLUDING ROUTING, PROTECTION, OVERCURRENT PROTECTION, GROUNDING, AND ANY REQUIRED TEMPORARY DISTRIBUTION EQUIPMENT. TEMPORARY AND EMERGENCY POWER SYSTEMS SHALL BE INSTALLED IN COMPLIANCE WITH NEC REQUIREMENTS AND LOCAL AHJ REQUIREMENTS. COORDINATE ALL OUTAGES, CONNECTIONS, AND TEMPORARY POWER WORK WITH THE OWNER AND SCHOOL DISTRICT TO MAINTAIN CONTINUOUS OPERATION OF IT EQUIPMENT. CONTRACTOR SHALL VERIFY AVAILABLE CAPACITY AT THE HIGH SCHOOL SERVICE PRIOR TO CONNECTION. TEMPORARY POWER SHALL REMAIN IN SERVICE UNTIL THE NEW MIDDLE SCHOOL TRANSFORMER AND PERMANENT SERVICE ARE FULLY INSTALLED, ENERGIZED, TESTED, AND APPROVED FOR USE. ONCE THE MIDDLE SCHOOL TRANSFORMER IS INSTALLED AND ENERGIZED, THE IT ROOM SHALL BE TRANSFERRED BACK TO ITS ORIGINAL POWER SOURCE. IT ROOM 135B SUPPORTS CRITICAL COMMUNITY AND EMERGENCY SERVICES. ALL EQUIPMENT WITHIN THIS ROOM SHALL REMAIN OPERATIONAL AT ALL TIMES. THE CONTRACTOR SHALL NOTIFY THE OWNER AND ENGINEER OF ANY ISSUES RELATED TO THIS WORK PRIOR TO OR DURING TRANSFORMER REPLACEMENT.

ELECTRICAL DEMO KEYED NOTES - MASTER

D1	DEMO EXISTING LIGHTING, CONTROLS AND REMOVE AND RE-INSTALL CEILING MOUNTED DEVICES IN THIS AREA. NOTE THAT NOT ALL DEVICES REQUIRING RE-INSTALLATION MAY BE SHOWN. CONTRACTOR TO VERIFY CEILING MOUNTED DEVICES PRIOR TO BIDDING. RE-INSTALL DEVICES AS CLOSE TO ORIGINAL LOCATION AS POSSIBLE. SEE SHEETS E-110A & E-110B FOR LIGHTING AND CONTROLS LAYOUT.
D2	EXISTING CEILING AND CEILING MOUNTED DEVICE TO REMAIN. DEMO EXISTING LIGHTING IN THIS ROOM. NEW LIGHTING FIXTURES TO CONNECT TO EXISTING CIRCUITING AND CONTROLS.
D3	EXISTING STAGE LIGHTING AND ASSOCIATED WIRING TO BE REMOVED AND RE-INSTALLED ONCE CEILING WORK IS COMPLETED.
D4	EXISTING PAD MOUNTED TRANSFORMER IN DETERIORATED CONDITION AND SHALL BE COMPLETELY REMOVED INCLUDING ALL ASSOCIATED WIRING AND GROUNDING COMPONENTS. THE EXISTING CONCRETE PAD IS UNDERSIZED AND DOES NOT MEET CURRENT UTILITY OR CODE REQUIREMENTS. CONTRACTOR SHALL DEMOLISH AND DISPOSE OF THE EXISTING CONCRETE PAD IN ITS ENTIRETY. EC TO MAINTAIN ALL SAFETY MEASURES AND PROVIDE TEMPORARY PROTECTION, BARRICADES AND REQUIRED NOTICES DURING TRANSFORMER REMOVAL AND PAD REPLACEMENT. EC TO COORDINATE WITH OWNER PRIOR TO ANY DEMOLITION OR TERMINATION OF SERVICE TO BUILDING.
D5	MECHANICAL EQUIPMENT TO BE DEMOED (DIV 15). DIV 16 TO REMOVE ALL ASSOCIATED WIRING, CONDUIT, BOXES AND DISCONNECTS BACK TO SOURCE. IF UNIT IS BEING REPLACED, AND EXISTING CONDUIT IS IN GOOD CONDITION AND SIZED APPROPRIATELY, EXISTING CONDUIT MAY BE RE-USED FOR NEW CONDUCTORS TO PROPOSED EQUIPMENT.
D6	REMOVE AND RE-INSTALL EXISTING PROJECTOR AND ASSOCIATED RECEPTACLE.
D7	DEMO EXISTING SPEAKER. SEE ELECTRICAL PLANS FOR NEW SPEAKER TO BE PROVIDED.
D8	DEMO EXISTING PANEL. DE-ENERGIZE ALL FEEDERS AND BRANCH CIRCUITS SERVING THE EXISTING FLUSH-MOUNTED PANEL PRIOR TO WORK. COORDINATE OUTAGES WITH OWNER. IDENTIFY, TAG, AND DOCUMENT ALL EXISTING CIRCUITS PRIOR TO DISCONNECTION FOR RECONNECTION TO NEW SURFACE-MOUNTED PANEL. REMOVE EXISTING PANEL, BREAKERS, TRIM, GROUNDING/BONDING, AND ASSOCIATED CONDUITS. REMOVE ABANDONED CONDUCTORS IN COMPLIANCE WITH NEC. MAINTAIN GROUNDING AND BONDING CONTINUITY AND PROTECT ADJACENT SYSTEMS DURING DEMOLITION. PROVIDE TEMPORARY POWER AS REQUIRED. PATCH AND RESTORE WALL SURFACES TO MATCH EXISTING CONDITIONS.

COPPER FEEDER & BRANCH CIRCUIT SCHEDULE

RATING (SEE NOTE A)	PHASE CONDUCTORS & NEUTRAL	EQUIPMENT GROUNDING CONDUCTOR	CONDUIT SIZE FOR 4W	CONDUIT SIZE FOR 2W OR 3W
15	12	12	3/4"	3/4"
20	12	12	3/4"	3/4"
25	10	10	3/4"	3/4"
30	10	10	3/4"	3/4"
35	8	10	1	3/4"
40	8	10	1	3/4"
45	8	10	1	3/4"
50	8	10	1	3/4"
60	6	10	1	1
70	4	8	1 1/4"	1
80	4	8	1 1/4"	1
90	3	8	1 1/4"	1 1/4"
100	3	8	1 1/4"	1 1/4"
110	2	6	1 1/2"	1 1/4"
125	1	6	2"	1 1/2"
150	1/0	6	2"	1 1/2"
175	2/0	6	2"	2"
200	3/0	6	2 1/2"	2"
225	4/0	4	2 1/2"	2 1/2"
250	250 KCMIL	4	3"	2 1/2"
275	300 KCMIL	4	3"	3"
300	350 KCMIL	4	3"	3"
325	400 KCMIL	3	3 1/2"	3 1/2"
350	500 KCMIL	3	3 1/2"	3 1/2"
400	(2) 3/0	(2) 3	(2) 2 1/2"	(2) 2"

COPPER FEEDER & BRANCH CIRCUIT SCHEDULE NOTES:

- UNLESS SPECIFICALLY NOTED OTHERWISE, THIS SCHEDULE APPLIES TO ALL ONE-LINE DIAGRAMS, PANEL SCHEDULES, AND EQUIPMENT CONNECTIONS SCHEDULES. A FEEDER OR BRANCH CIRCUIT RATING SHALL BE EQUAL TO THE SPECIFIED RATING OF ITS CORRESPONDING OCPD (OVERCURRENT PROTECTION DEVICE), UNLESS SPECIFICALLY NOTED OTHERWISE. RATINGS FOR EQUIPMENT CONNECTIONS SCHEDULES ARE NOTED IN THE "FEEDER RATING" COLUMN. THE TERM "RATING" IS NOT NECESSARILY SYNONYMOUS WITH "CURRENT-CARRYING CAPACITY" AND IS INTENDED SOLELY TO IDENTIFY PARTICULAR FEEDER SPECIFICATIONS.
- VALUES IN PARENTHESES INDICATE THE QUANTITY OF PARALLEL SETS IN SEPARATE CONDUITS.
- IF A FEEDER OR BRANCH CIRCUIT RATING EXCEEDS THAT OF IT CORRESPONDING OCPD, THEN ITS EQUIPMENT GROUNDING CONDUCTOR MUST BE INCREASED PROPORTIONALLY CROSS-SECTIONAL AREA TO THAT OF THE PHASE CONDUCTORS. THEREFORE, THE EQUIPMENT GROUNDING CONDUCTOR SIZE INDICATED IN THIS SCHEDULE SHALL APPLY ONLY IF IT IS NOT SPECIFICALLY NOTED OTHERWISE ON THE PLANS, ONE-LINE DIAGRAMS, OR EQUIPMENT CONNECTIONS SCHEDULES.
- A FEEDER RATING CAN BE SPECIFIED LESS THAN ITS ASSOCIATED OCPD WHEN IT SERVES A MOTOR LOAD WITH DEDICATED OVERLOAD PROTECTION AND ITS BREAKER IS "OVERSIZED" TO ALLOW FOR INCREASED STARTING CAPACITY (IN RUSH CURRENT).
- WIRE SIZES ARE BASED ON N.E.C. TABLE 310.15(B)(16) FOR COPPER THHN/THWN. 75-DEG C. CONDUIT SIZES ARE BASED ON TABLES IN N.E.C. "ANNEX C" THAT ARE APPLICABLE FOR RACEWAY TYPES SPECIFIED UNDER SECTION 2605.33 "RACEWAY AND BOXES FOR ELECTRICAL SYSTEMS".

Panelboard: DB												
Location: Supply: SWBD Mounting: Surface Enclosure: NEMA 1				Voltage: 208 V, 3Ø, 4W Bus Rating: 800 A Neutral: 100% Feed-Thru Lugs: No Features & Modifications: -				Mains Type: MCB Mains Rating: 800 A Mains FN/Note: - SCCR: 22 kA				
Ckt	Description	Trip (A)	Poles	FN/Note	Phase A...	Phase B...	Phase C...	FN/Note	Poles	Trip (A)	Description	Ckt
1					12669	6245					DH-1	2
3	DOAS-4	125	3	ALT. 3		12669	6245	ALT.2	3	70		4
5							12669	6245				6
7					30983	10940						8
9	DOAS-1	300	3			30983	10940		3	125	DOAS-3	10
11							30983	10940				12
13					0	12201						14
15	GYM FAN	15	3			0	12201		3	125	DOAS-2	16
17							0	12201				18
19					0	0						20
21	PANEL BETWEEN BATHROOM NORTH HALL	100	3			0	0		3	15	AUDITORIUM FAN	22
23							0	0				24
25					0	0						26
27	STAGE PANEL	150	3			0	0		3	150	PANEL A (GREEN ROOM)	28
29							0	0				30
31					0	--						32
33	STAGE LIGHTS	225	3			0	--		3	--	SPACE	34
35							0	--				36
37					--	--						38
39	SPACE	--	3			--	--		3	--	SPACE	40
41							--	--				42
Connected Load:					73 kVA	73 kVA	73 kVA					
Connected Current:					609 A	609 A	609 A					
Load Classification	Connected	Factor	Demand	Panel Totals								
Other	219114 VA	100.00%	219114 VA	Connected Load:	219 kVA	Connected Current:	608 A	Demand Load:	219 kVA	Demand Current:	608 A	
Notes:												

Panelboard: A												
Location: Supply: Mounting: Surface Enclosure: NEMA 1				Voltage: 208 V, 3Ø, 4W Bus Rating: 150 A Neutral: 100% Feed-Thru Lugs: No Features & Modifications: -				Mains Type: MLO Mains Rating: 150 A Mains FN/Note: - SCCR: 10 kA				
Ckt	Description	Trip (A)	Poles	FN/Note	Phase A...	Phase B...	Phase C...	FN/Note	Poles	Trip (A)	Description	Ckt
1	SPARE OUTSIDE OLD RESTROOMS	20	1		0	0			2	20	POP OUTLETS DEAN OFFICE	2
3	EXIST	20	1			0	0		1	20	NORTHEAST HEATER	4
5	HEATER	20	1				0	0	1	20	EXIST	6
7	EXIST	20	1		0	0			1	20	OFFICE DEAN	8
9	SOUND SYSTEM	20	1			0	0		1	20	LOBBY HEATER	10
11	CAB UNIT HEATER	20	1				0	0	1	20	ADUT. WALKING LIGHT	12
13	LOBBY	20	1		0	0			1	20	SPARE	14
15	SPARE	20	1			0	0		1	20	HOUSE LITES OVER SEATS	16
17	EXIST	20	1				0	0	1	20		18
19	TELEPHONE SYSTEM	20	1		0	0			1	20		20
Connected Load:					0 kVA	0 kVA	0 kVA					
Connected Current:					0 A	0 A	0 A					
Load Classification	Connected	Factor	Demand	Panel Totals								
				Connected Load:	0 kVA	Connected Current:	0 A	Demand Load:	0 kVA	Demand Current:	0 A	
Notes:												



A RUEKERT & MIELKE COMPANY

MIDDLE SCHOOL HVAC UPGRADE

1059 3RD AVE NW, WAUKON, IA 52172

ALLAMAKEE CSD

ISSUED FOR

BIDDING

DATE	DESCRIPTION	DATE
02/20/2026		
ADDENDUM 01		03-02-2026
ADDENDUM 03		03-11-2026

DRAWN BY	DMS
CHECKED BY	KDM
PROJECT NO.	9166-10000

SHEET NAME

ELECTRICAL PANEL SCHEDULES

E-604

NOT FOR CONSTRUCTION

PROVIDE NEW TYPE-WRITTEN CIRCUIT DIRECTORIES TO INCLUDE NEW LOADS FOR ALL PANELBOARDS

MIDDLE SCHOOL HVAC UPGRADE

1059 3RD AVE NW, WAUKON, IA 52172

ALLAMAKEE CSD

ISSUED FOR

BIDDING

DATE	02/20/2026
DESCRIPTION	DATE
ADDENDUM 01	03-02-2026
ADDENDUM 02	03-06-2026
ADDENDUM 03	03-11-2026

DRAWN BY: DMS
CHECKED BY: KDM
PROJECT NO.: 9166-10000

SHEET NAME
ELECTRICAL PANEL
SCHEDULES -
PHOTOS

E-605

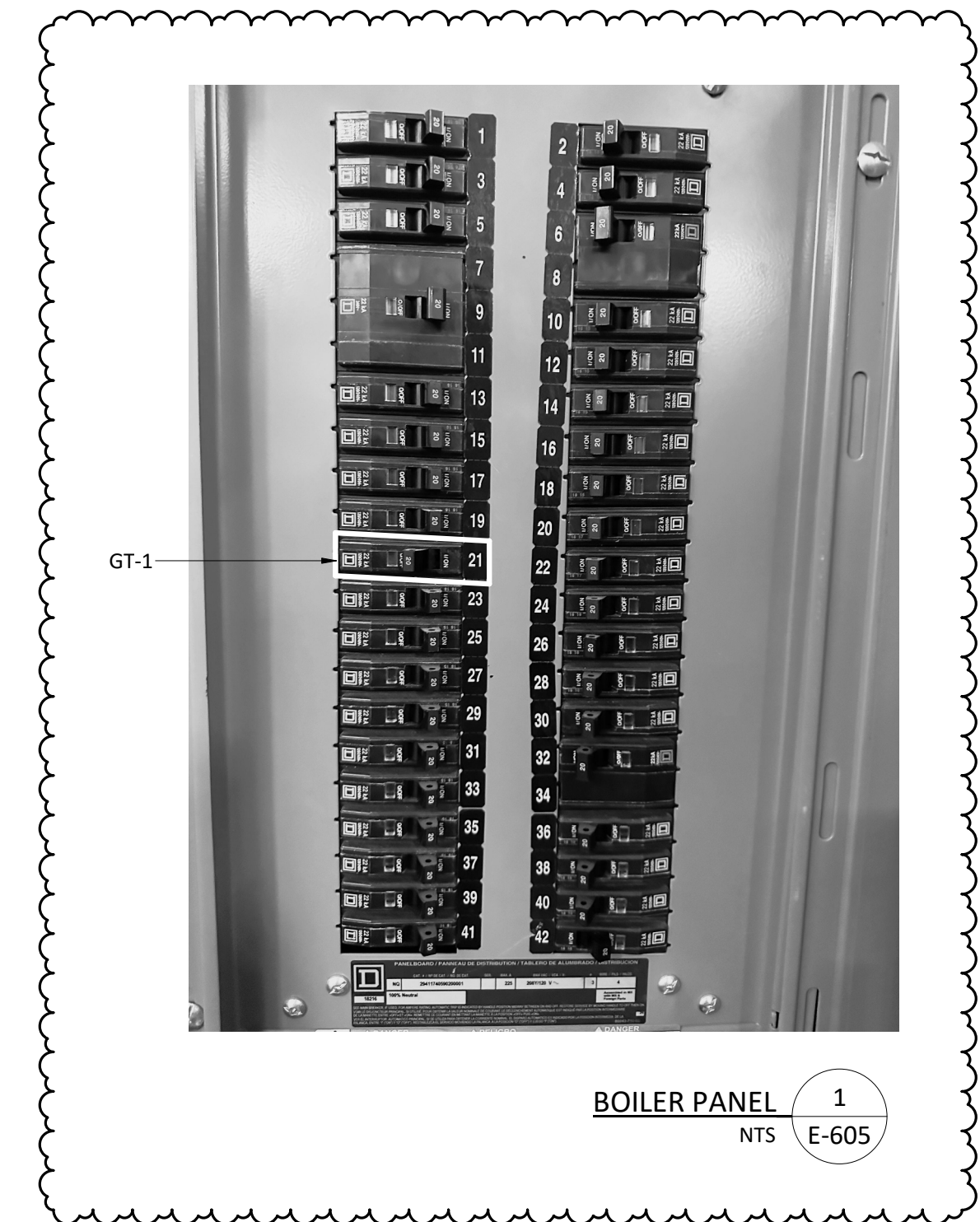
NOT FOR CONSTRUCTION



HE PANEL 3
NTS E-605



STAGE PANEL 2
NTS E-605



BOILER PANEL 1
NTS E-605

Axiom Consultants # 9166-10000 - Allamakee CSD - Middle School HVAC Upgrades

The Allamakee Community School District Middle School HVAC Upgrades Project shall consist of providing ductless mini-split heat pump / air conditioning systems, hot water pumps, dedicated outside air units, kitchen air handling units, dining room air handling unit, terminal heating units, control valves, test and balancing, individual room heating and cooling units, ducted air distribution systems, control system upgrades, electrical system upgrades, new ceilings, new lights, incidental fire alarm modifications, incidental plumbing system modifications, incidental painting, flooring, incidental sprinkler protection, walk-in cooler and freezer cooling equipment, new primary electrical transformer, ventilation units for High School and Middle School locker room areas, and replacement windows under the base bid work to in the Waukon Middle School. Also included in the Waukon Middle School base bid work are demolition of specified components and removal, off site storage, and return of movable items to make way for asbestos removal and project construction. Alternate work shall include new windows and exterior wall work at East Elementary School, Middle School humidification systems, and the total remodeling of the Middle School Auditorium and Stage systems, and associated architectural component changes. Alternates for work shall include new heating for the East Elementary School stage, new stage curtains for East Elementary School and Middle School Auditorium stages, replacement windows, and replacement flooring materials at East Elementary School. All work is within the city limits of Waukon, Iowa. All project work shall be substantially complete by November 30, 2026. All contract work must be completed by December 31, 2026.

Plan Holders

Date	Company	Contact	Bid Categories
2/23/26 9:20 am	03/2023 42617 County Road 12, Dakota, MN 55925 Dakota, MN 55925	Landon Jorgenson Managing Member Tel: 5074591896 landon@fpsprinklers.com	Fire Protection
2/20/26 4:25 pm	A&J Associates 206 North Point Ln Dallas Center, IA 50063	Victor Amoroso Tel: 319-333-9955 amorosovic@ajengineers.net	Architect/Engineer
2/20/26 4:27 pm	Air Control Products, Inc 8230 Hickman Road Clive, IA 50325	Linda Albrecht President Tel: 515-271-5994 Fax: 515-274-2641 lindaa@aircntrl.com	HVAC
2/23/26 10:41 am	Allamakee CSD 1059 3rd Ave. NW Waukon, IA 52172	Jay Mathis jmathis@allamakee.k12.ia.us	Owner Plumbing Windows

Date	Company	Contact	Bid Categories
2/23/26 9:17 am	American Fence Company 15225 Industrial Rd Omaha, NE 68144	Dave Birge Lead Generation Tel: (531) 329-4400 x269 Fax: 402-896-9730 leadgeneration@americafence.com	Fencing
2/20/26 4:23 pm	Axiom Consultants 300 S. Clinton Unit 200 Iowa City, IA 52240	Joe Lomheim Tel: 7124905553 jlomheim@axiom-con.com	Architect/Engineer
2/23/26 12:39 pm	Blackridge Research & consulting 4041 w Hollow Creek Drive Peoria, IL 61615	Venkatesh Siva Tel: 9179937467 venkatesh@blackridgeresearch.com	General/Prime
2/23/26 9:14 am	Blake Electric, Inc. PO BOX 171 Waukon, IA 52172	John Blake Tel: 563-568-3686 john@blakeelectricinc.com	Electrical
3/6/26 9:03 am	Bowman & Associates, Inc. 3802 34th St. Moline, IL 61265	Mike Christensen sales Tel: (309)762-1537 mike@bowmanandassociates.com	Other
3/8/26 10:39 pm	C&O SALES 346 2nd ave sw CEDAR RAPIDS, IA 52404	chris boyer inside sales Tel: 319-365-5259 chrisb@cosalesrep.com	Electrical
2/21/26 10:17 am	Casper Plumbing & Heating 804 Pole Line Rd Decorah, 52101	Randy Voigt Tel: 563-382-0642 Fax: 563-382-0503 rvoigt@casperdecorah.com	General/Prime HVAC Mechanical Plumbing
3/3/26 9:31 am	CED - Universal Electric 2775 University Avenue DUBUQUE, IA 52001	MARK SAND QUOTATIONS Tel: 563-583-1765 Fax: 563-583-5058 msand@ceduniversal.com	Electrical
3/9/26 9:24 am	CED / Culver Hahn 2001 15th St SW Mason City, IA 50401	Craig Hestness Lighting Tel: 6414236343 chestness@culverhahn.com	Electrical
2/24/26 8:26 am	Crescent Electric Supply 1225 26th Ave Court SW Cedar Rapids, IA 52404	William Reiter Quotations Tel: 563-583-6411 Fax: 319-866-4536 wjreit@cesco.com	Electrical

Date	Company	Contact	Bid Categories
2/20/26 4:25 pm	Design Dynamics, Inc. 1500 2nd Ave SE Suite 212 Cedar Rapids, IA 52403	Robert Peck Tel: 319-298-0400 robertp@designdynamics.biz	Architect/Engineer
2/22/26 2:15 pm	Dodge Data Analytics 2860 S Stage Hwy 161 Ste 160 #501 Grand Prairie, TX	Jayalakshmi L Tel: 4133767032 jayalakshmil@construction.com	Other
3/9/26 6:56 pm	Environmental Management Services of Iowa, Inc. 5170 Wolff Road Ste. 2 Dubuque, IA 52002	Kim Koeller President Tel: 563-583-0808 Fax: 563-583-2206 emsi.asbestoservices@aol.com	Asbestos
3/6/26 3:49 pm	Flow-Tech Solutions 2309 Pear Lane Madrid, IA 50156	Brittney Burrows Project Operations Coordinator Tel: 5152051045 brittney.burrows@flow-techsolutions.com	HVAC Mechanical
3/6/26 10:17 am	H2I Group Inc. 3120 Capital Way Cedar Falls, IA 50613	Kurt Steiert Solutions Specialist Tel: 319-553-4352 ksteiert@h2igroup.com	Equipment
2/24/26 5:44 pm	HYDRONIC ENERGY 3307 104TH STREET Des Moines, IA 50322	Rick Kapustka Tel: 5152764935 rick@hydronicenergy.com	Supplier
3/9/26 11:14 am	Kennedy Insulation Systems 714 Ansborough Ave Waterloo, 50701	Sean Kennedy Tel: 319-234-4048 Fax: 319-213-9755 sean@kennedyinsulation.com	Insulation Mechanical
2/23/26 8:47 am	LaCrosse Builders Exchange 427 Gillette St LaCrosse, 54603	Room Plan Tel: 608-781-1819 Fax: 608-781-1718 planroom@laxbx.com	Planroom
3/10/26 11:43 am	Lee Systems 7, Inc. 1171 LaPorte Rd. Lot #10 Brandon, IA 52210	Charles Lee Tel: 319-269-3152 clee@leesystems7.com	Other
2/23/26 2:18 pm	Master Builders of Iowa 221 Park Street Des Moines, IA 50309	Cindy Adams Project Information Specialist Tel: 515-288-7339 Fax: 515-288-8718 mbiplanroom-dsm@mbionline.com	Planroom

Date	Company	Contact	Bid Categories
2/26/26 2:24 pm	Matt Construction, Inc. 203 Y Avenue Sumner, IA 50674	Megan Matt-Callahan Project Manager Tel: 3194296476 Fax: 563-578-5791 megan.mattconstruction@gmail.com	General/Prime
3/9/26 3:32 pm	Mechanical Sales (Urbandale) 11009 Aurora Ave Urbandale, IA 50322	Shaun Funke Tel: 319-366-1033 Fax: 319-366-3902 sfunke@mechsales.com	HVAC
2/23/26 7:25 am	Minnesota Builders Exchange 1123 Glenwood Minneapolis, MN 55405	Jeff Boelter Tel: 612-381-2620 mbex1123@gmail.com	General/Prime Planroom
2/23/26 10:42 am	Olympic Builders General Contractors, Inc. 405 North Star Road Holmen, WI 54636	Cindy Broer Office Assistant Tel: 608-526-4622 Fax: 608-526-4690 office@olympicbuildersgc.com	General/Prime
2/25/26 9:27 am	Omaha Builders Exchange 4159 S. 94th St Omaha, NE 68127	Lisa Shockey Tel: 402-991-6906 Fax: 402-884-7055 lisa.shockey@omahaplanroom.com	Planroom
2/23/26 9:43 am	PERRY NOVAK ELECTRIC INC. 2727 LOCUST ROAD DECORAH, IA 52101	Brent Freiling General Manager Tel: 563-382-2179 Fax: 563-382-9877 brent@pne.us	Electrical
3/2/26 8:18 am	Personified Inc 326 W 17th St Waterloo, IA 50702	Chris Jessen Estimator/Project Coordinator Tel: 319-232-3369 Fax: 319-232-5870 chris@personifiedpmi.com	Insulation Mechanical
3/6/26 6:13 am	QCI Thermal Systems 2365 Northeast Drive Waterloo, 50703	Brian Milius Tel: 319-235-0949 Fax: 319-235-9514 brianmilius@qcits.com	Insulation Mechanical
2/20/26 4:23 pm	Rapids Reproductions, Inc. 415 Highland Avenue Suite 100 Iowa City, IA 52240	Iowa City Repro Project Reprographer Tel: 319-354-5950 Fax: 319-354-8973 iowacity@rapidsrepro.com	

Date	Company	Contact	Bid Categories
2/23/26 3:21 pm	Republic Electric Company 737 Charlotte Street Davenport, IA 52803	Michael Beninga Territory Manager Tel: 319-415-7113 beningam@republicco.com	Electrical
2/23/26 9:19 am	SEE Electric 2337 Shag Bark Lane Road Decorah, IA 52101	Don Van Duyn Tel: 563-382-6116 Fax: 563-382-4133 info@seeelectric.com	Electrical
3/4/26 9:17 am	Setpoint Mechanical 8951 Thomas Ave Johnston, IA 50131	Austin Deeming Tel: 5159746497 austin@setpointmech.com	HVAC
2/24/26 10:37 am	Setpoint Mechanical 8951 Thomas Ave Johnston, IA 50131	Isaac Anderson Air Distribution Specialist Tel: 5157837124 isaac@setpointmech.com	HVAC
3/3/26 8:50 am	Siemens 3175 12th St SW Cedar Rapids, IA 52404	Zachary Lyness Tel: 9727651814 zachary.lyness@siemens.com	HVAC
3/3/26 12:30 pm	Sweeney Builders, Inc 511 8th Ave. NW Waukon, IA 52172	Brennan Sweeney Project Manager / Estimator Tel: (563) 568-2887 brennan@sweeneybuilders.com	General/Prime
3/6/26 7:36 am	Systems Management & Balancing 925 SE Olson Drive Waukee, IA 50263	Tesha Thrailkill Estimator Tel: 515-987-2825 teshat@hvactab.com	HVAC Mechanical Piping
3/3/26 10:35 am	The La Crosse Builders Exchange 709 Gillette Street La Crosse, WI 54603	Data Reporter Construction Reporter Tel: 6087811819 Fax: 608-781-1819 planroom@laxbx.com	Planroom
3/1/26 8:55 pm	Trane 4801 Grand Avenue Davenport, IA 52807	Trane Bids Iowa Tel: 5634684910 tranebidsiowa@trane.com	HVAC
3/9/26 12:56 pm	Trane - Davenport 4801 Grand Ave Davenport, IA 52807	Justin Block Tel: 5634684900 justin.block@trane.com	HVAC

Date	Company	Contact	Bid Categories
2/24/26 9:37 am	Tricon Construction Group 1230 East 12th St Dubuque, IA 52001	Tricon Estimator Tel: 563-588-9516 Fax: 563-588-9519 tricon@triconcg.com	General/Prime
3/3/26 3:44 pm	Unzeitig Construction 1619 F ave NE cedar rapids, 52403	Jim Unzeitig Tel: 319-362-3221 Fax: 319-362-2849 jim.unzeitig@unzeitig.com	General/Prime
3/3/26 8:59 am	Unzeitig Construction 1619 F ave NE cedar rapids, IA 52403	Jim Unzietig Tel: 319-362-3221 jim.unzeitig@unzeitig.com	General/Prime
3/6/26 5:01 pm	VHF Sales Inc 2655 SE Enterprise Dr Grimes, IA 50111	Kimberly Beck Tel: 15152389611 kimberly@vhfsales.com	Mechanical
3/9/26 8:06 am	VHF Sales Inc 2655 SE Enterprise Dr Grimes, IA 50111	Joe Vest Tel: 5159863671 joe@vhfsales.com	HVAC
2/23/26 10:54 am	VHF Sales Inc 2655 SE Enterprise Dr Grimes, IA 50111	Michael Skallerud Engineering and Sales Tel: 515-986-3671 Fax: 515-986-2564 mike@vhfsales.com	HVAC
2/23/26 10:44 am	winona controls 108 Bissen st caledonia, MN 55921	Adam Augedahl Tel: 5074500173 adam@winonacontrols.com	HVAC
3/5/26 11:33 am	Woodruff Construction, LLC 1717 Falls Avenue Waterloo, IA 50701	Nate Harden Tel: 319-233-3349 Fax: 319-233-3369 nateh@woodruff.build	General/Prime
3/4/26 7:18 am	zephyr aluminum products 555 huff st. dubuque, IA 52003	Scott Timmerman Project Manager/Estimator Tel: 5635882036 Fax: 563 588-4355 scottt@zephyralum.com	Glass/Glazing